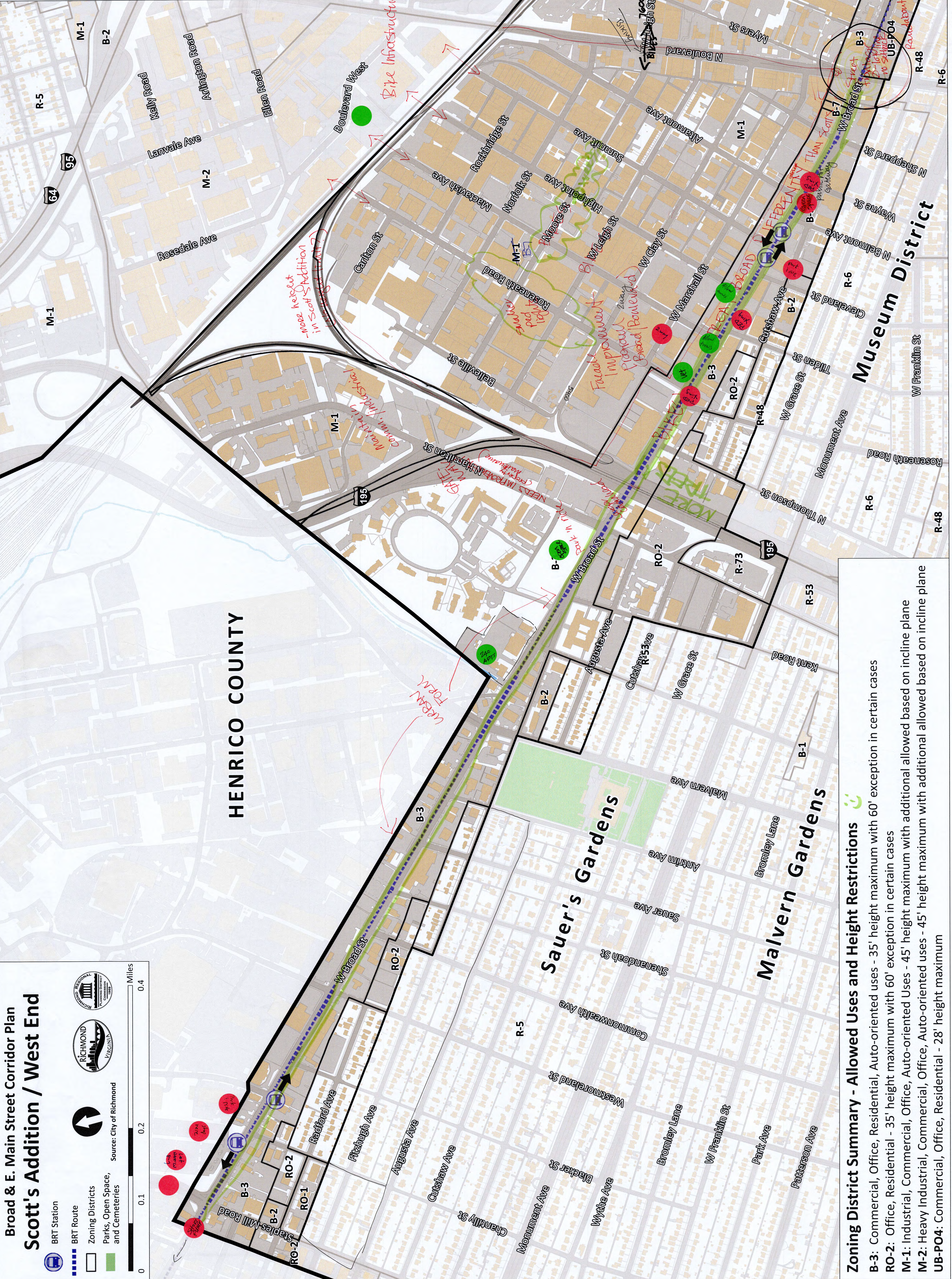


**Broad & E. Main Street Corridor Plan**  
**Scott's Addition / West End**

BRT Station  
 BRT Route  
 Zoning Districts  
 Parks, Open Space, and Cemeteries

Source: City of Richmond

0 0.1 0.2 0.4 Miles



**Zoning District Summary - Allowed Uses and Height Restrictions**

B-3: Commercial, Office, Residential, Auto-oriented uses - 35' height maximum with 60' exception in certain cases  
 RO-2: Office, Residential - 35' height maximum with 60' exception in certain cases  
 M-1: Industrial, Commercial, Office, Auto-oriented Uses - 45' height maximum with 60' exception in certain cases  
 M-2: Heavy Industrial, Commercial, Office, Auto-oriented uses - 45' height maximum with additional allowed based on incline plane  
 UB-PO4: Commercial, Office, Residential - 28' height maximum