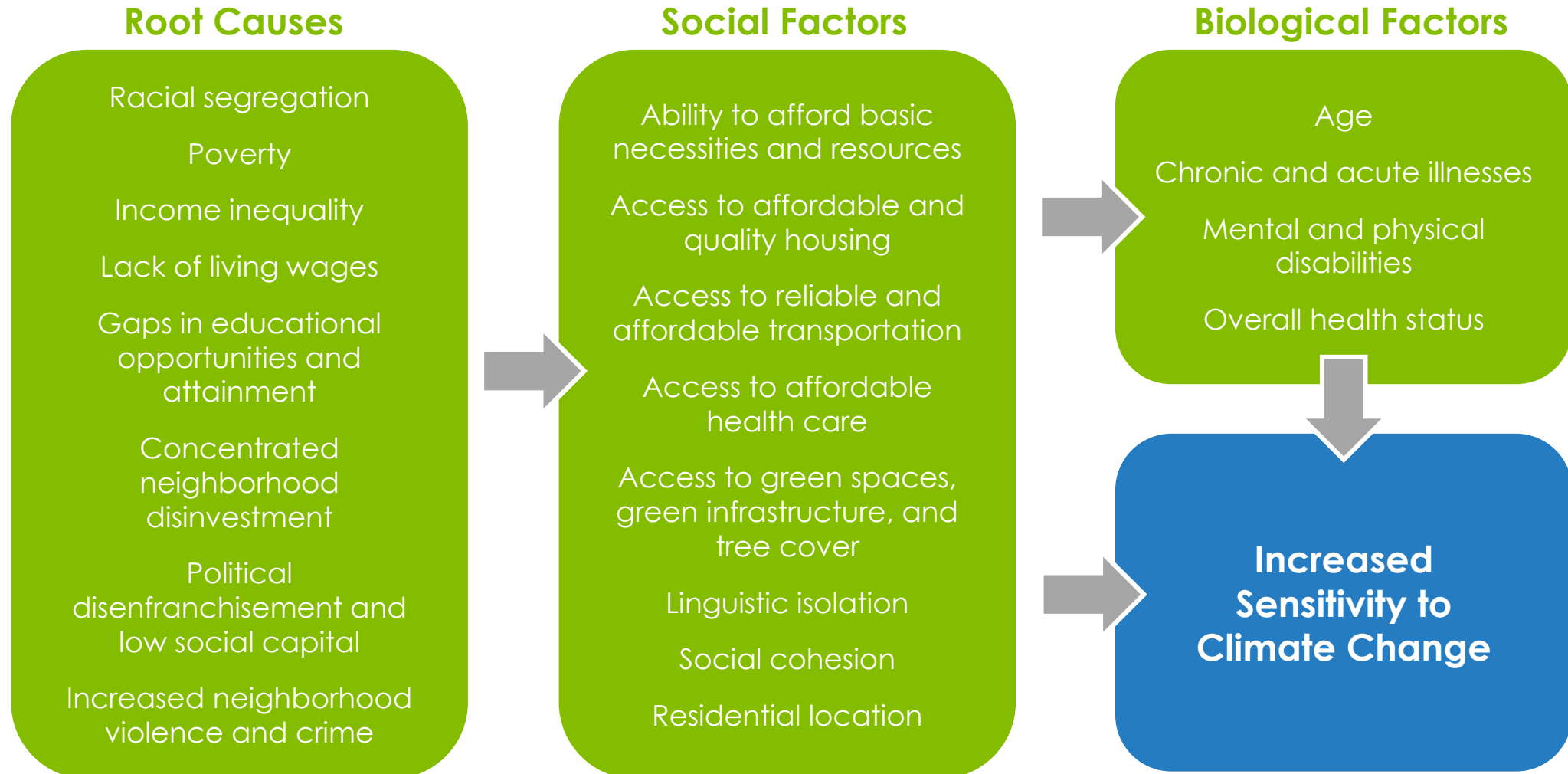


Racial Equity and Environmental Justice Roundtable
Meeting #1 | October 27, 2020

City of Richmond
RVAgreen
2050

Equitable climate action for a
healthy and resilient Richmond

Climate Change Affects Some More Than Others



Source:
Government
Alliance for Racial
Equity (modified)

Race, Income & Disproportionate Climate Impacts

Low-income populations and communities of color are more likely to...



live in areas with less greenspace and are more vulnerable to respiratory and heat related illnesses



lack access to energy efficient housing and often are disproportionately impacted by high energy bills



be impacted by extreme weather events as a result of climate change



live in neighborhoods that lack convenient access to transit, or safe walking and biking options



live in housing without air conditioning and are more vulnerable to heat related and respiratory illnesses and death




be exposed to pollution and airborne allergens and are more vulnerable to asthma and other respiratory illnesses

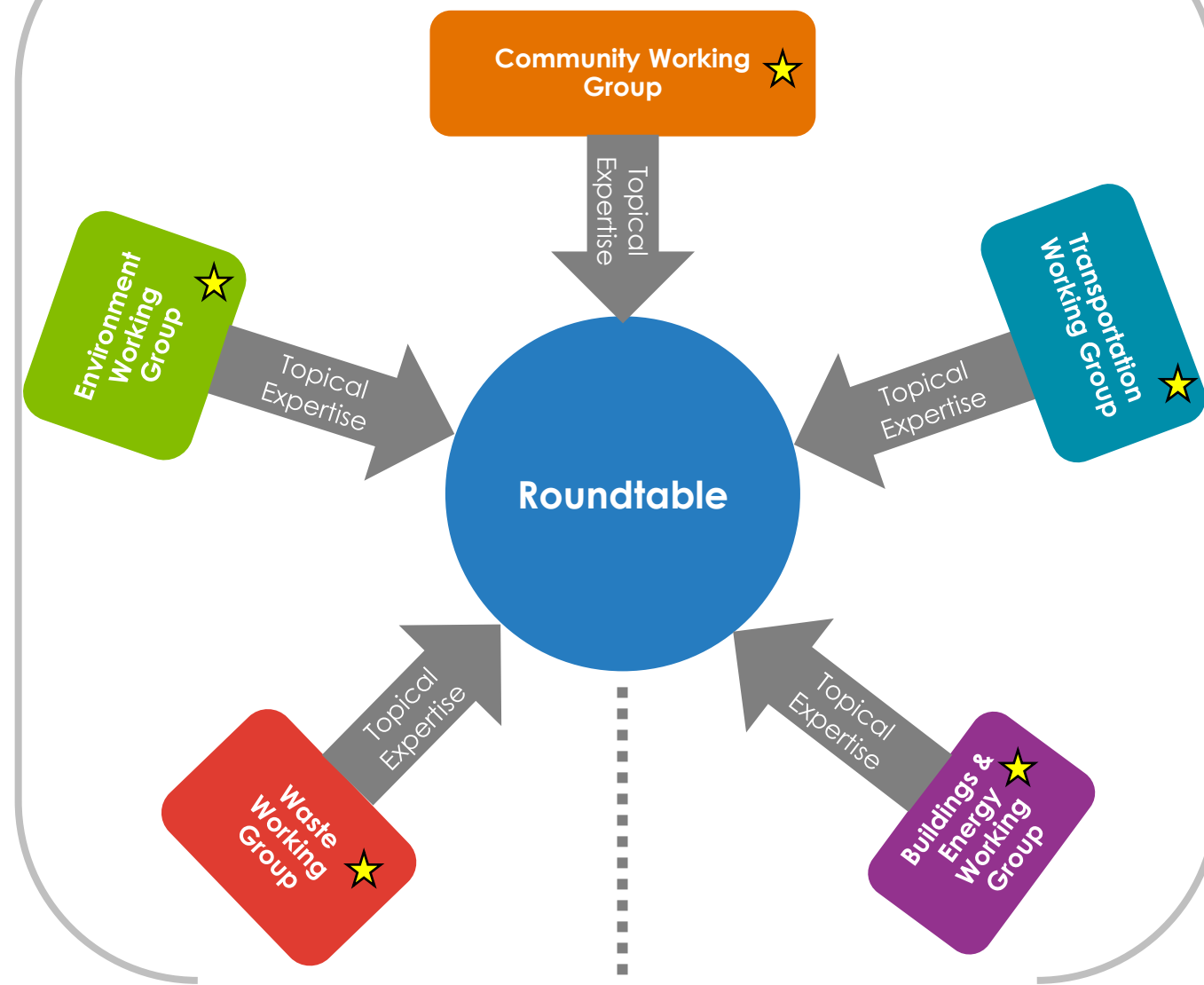
RVAgreen 2050 Process



Strategies in this phase have been adapted to maintain health and safety during the COVID-19 pandemic

 **We are here!**

Roundtable =
shaping planning process and content



Community Engagement

Phase 1: Understanding Community Priorities

- ★ Listening sessions w/ frontline organizations (virtual)
- Virtual Ambassador Program
- Community survey

Phase 2: Developing Strategies

- ★ Frontline community workshops
- Communitywide Input Sessions #1

Phase 3: Refining Strategies

- ★ Frontline community workshops
- Communitywide Input Sessions #2

- ★ Neighborhood-Level Engagement
- Broader Community Engagement

■ **Office of Sustainability/City government responsibilities throughout:**
■ Engagement & Communication ★
■ Government Accountability ★

★ *Community priorities from listening process*

RVAgreen 2050 Survey Update (407 Responses)

RVAgreen 2050 Demographics

- 19% are from the 2nd District
- 38% are 30-39 years old
- 64% are women
- 83% are white
- 99.5% speak English at home
- 82% have a bachelor's or higher
- 19% earn between \$100,000-\$150,000
- 75% do NOT have a child in the home
- 63% own their home

City of Richmond Demographics

- 228,783 total population
- 18% are 30-39 years old
- 52% are women
- 45% are white
- 10% speak another language
- 39% have a bachelor's or higher
- Median household income \$51,285
- 18% have children in the home
- 44% own their home

Questions?

Introductions

Office of Sustainability

Kendra Norrell – Community Engagement Coordinator

Brianne Mullen – Sustainability Coordinator

Dawn Oleksy – Climate Action Program & Operations Supervisor

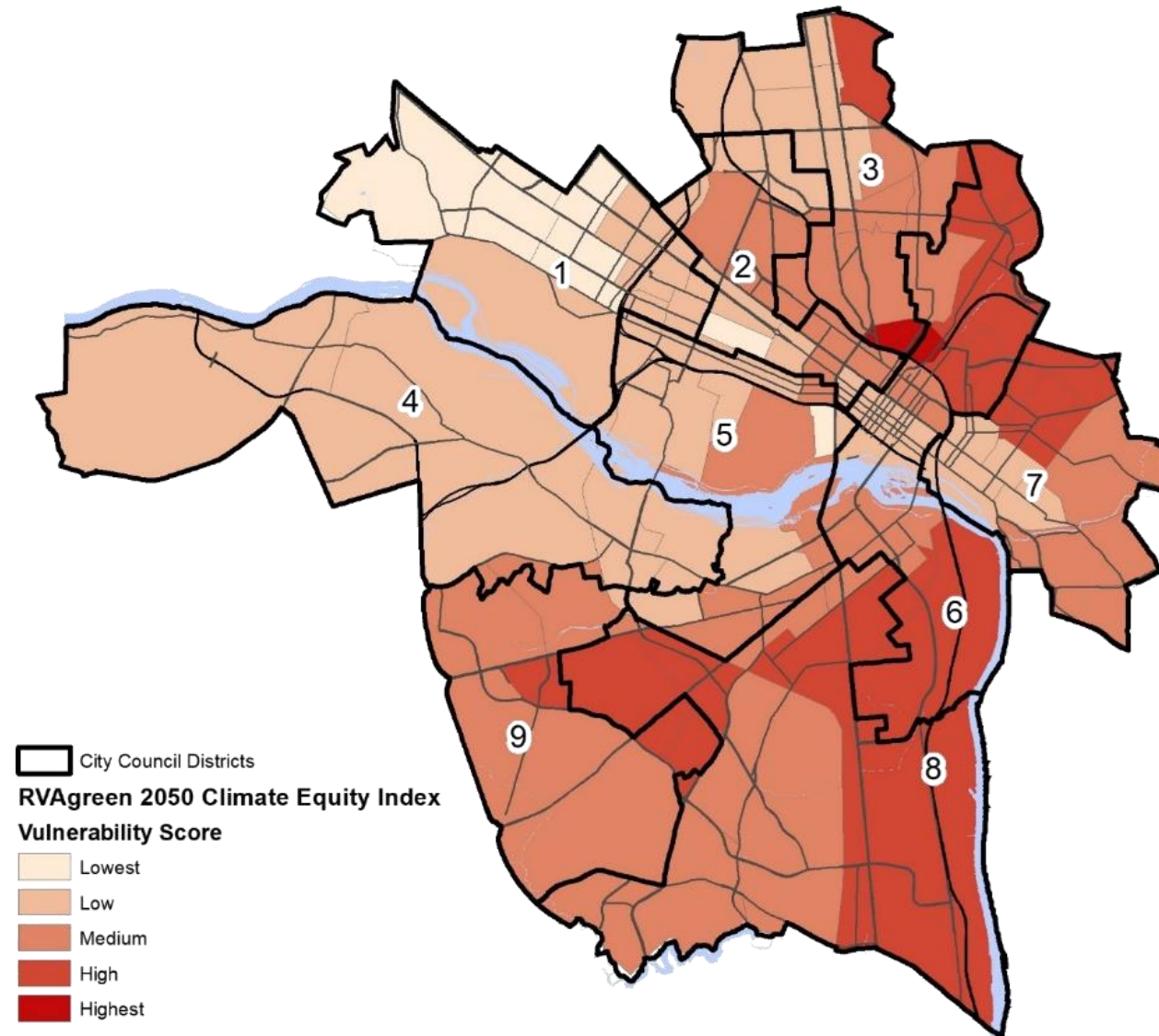
Equity Consultants

Ebony Walden – Ebony Walden Consulting

Matthew Freeman – Dialectix Consulting

This Evening...

Climate Equity Index



- Poverty
- Age
- Race
- Gender
- Disabilities
- Chronic health conditions
- Mental health
- Household composition
- Working outdoors
- Public assistance income
- Housing characteristics
- Crime
- Education
- Language
- Social isolation
- Employment
- Transportation access
- Air conditioning
- Housing (shelters, group homes)

Centering Equity in RVAgreen 2050

Source: Government Alliance
for Racial Equity (modified)

Racial and Socio-Economic Equity

Make a commitment to
correct past harms and
prevent future unintended
consequences

Address the underlying
structural and institutional
systems that are the root
causes of social and racial
inequities

Procedural

⋮

Create processes that are
transparent, fair, and
inclusive in developing and
implementing any program,
plan, or policy

Ensure that all people are
treated openly and fairly

Increase the civic
engagement opportunities
of communities that are
disproportionately impacted
by climate change

Distributional

⋮

Fairly distribute resources,
benefits, and burdens

Prioritize resources for
communities that
experience the greatest
inequities, disproportionate
impacts, and have the
greatest unmet needs

Structural

⋮

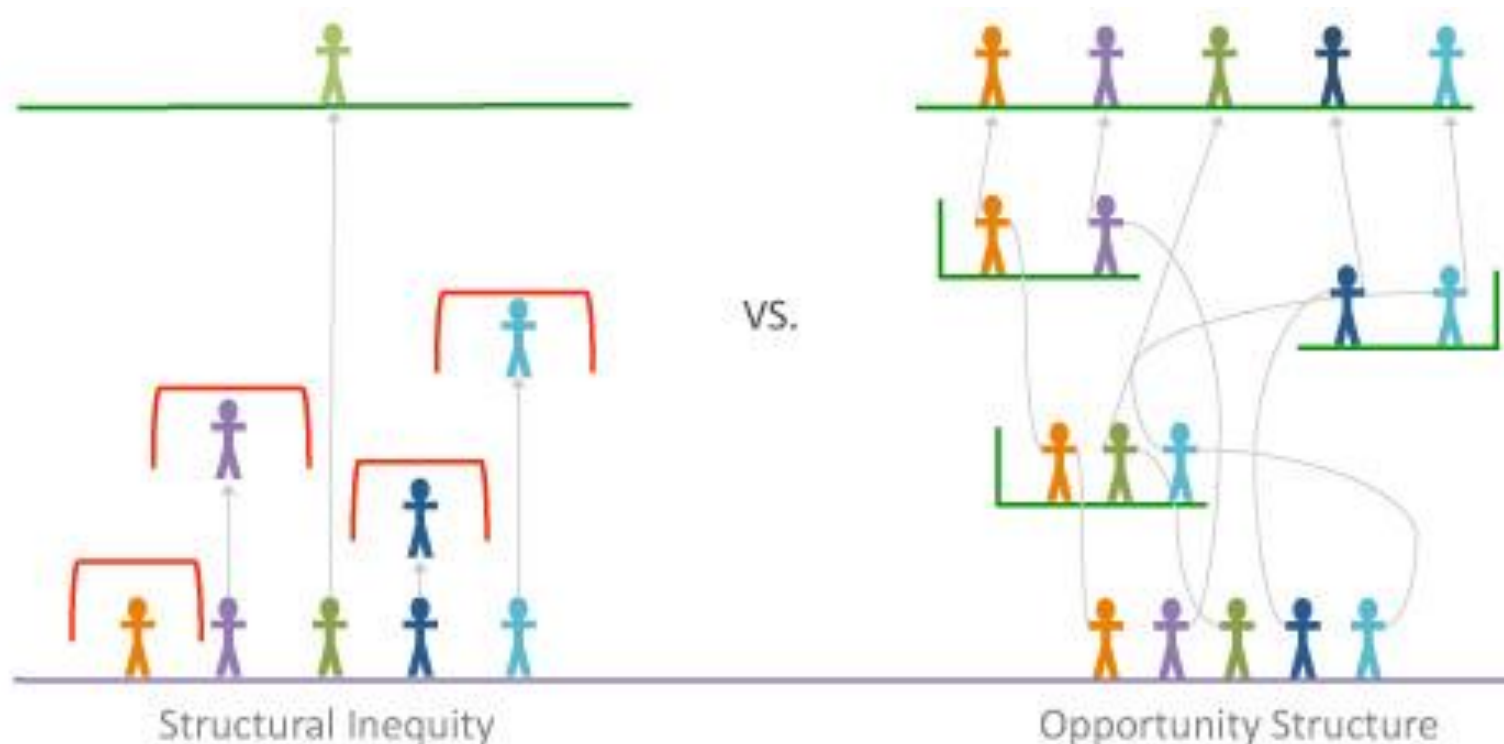
Closing the gaps so race
and economic status can
no longer be used to
predict life outcomes and
outcomes for all groups are
improved

Universal Goal, Targeted Actions

RVAgreen 2050 is equitable climate action for **a healthy and resilient Richmond**.

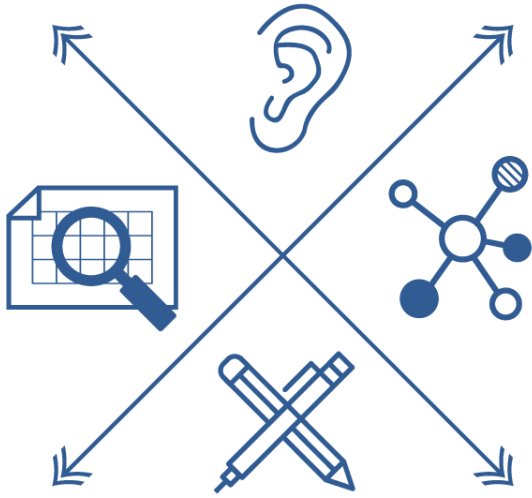
Our **targeted universal strategy** is inclusive of the needs of both dominant and marginalized groups but pays particular attention to the situation of the marginalized group.

ONE SIZE
DOES NOT
FIT ALL



Source: Kapwa Consulting; John Powell, Hass Institute; City of Portland, OR (modified)

People-Centered Approach



We are using the **Virginia Community Voice Blueprint** to guide our efforts to engage and equip Richmonders in this process, particularly frontline communities.

Our approach begins with the identification of issues faced on a personal level and explores creative solutions that will best suit an individual's needs.

Understanding Community Priorities

Listen: Identify community strengths and challenges

- Listening sessions w/ frontline organizations (virtual)
- Gathering existing community-based plans, surveys, etc.
- Virtual Ambassador Program
- Community survey

Plan Development

Connect: Organize people around key issues

- Roundtable
- Topical working groups

Craft: Collaborate on equitable solutions

- Frontline community workshops
- Communitywide input Sessions

Reflect: Gather feedback for impact and improvement

- Mid-process equity assessment
- Final equity assessment
- Racial equity-specific indicators

Understanding Community Priorities

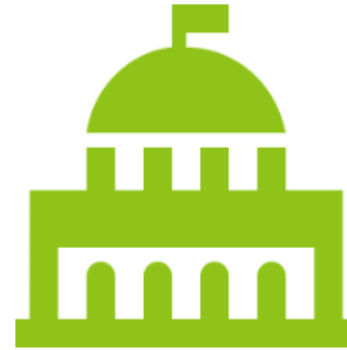
The RVAgreen 2050 planning process is centered in equity and the priorities of the Richmond community. What we've heard so far:



Racial Equity &
Environmental Justice



Engagement &
Communication



Government
Accountability



Community
Wealth



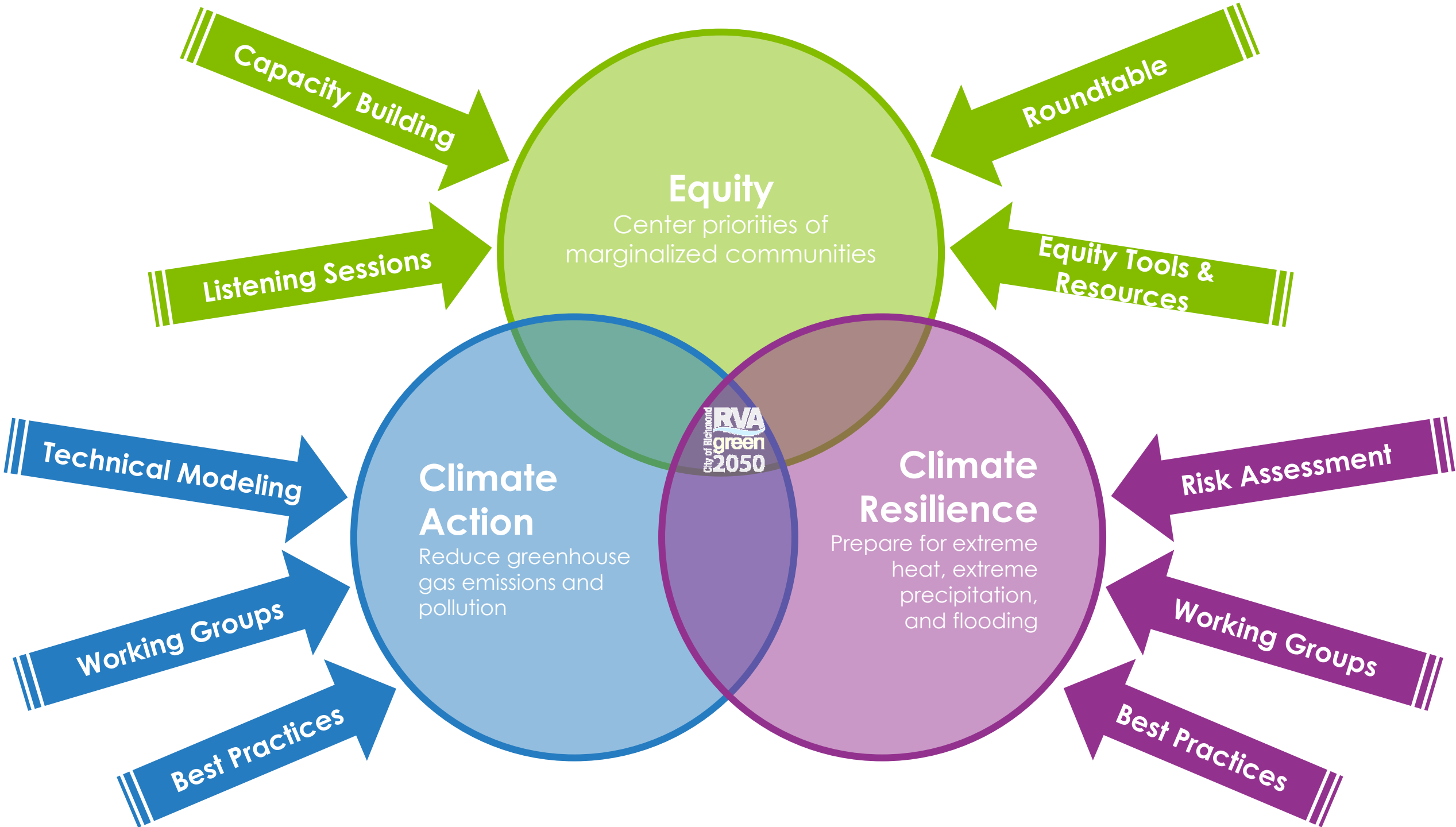
Housing &
Buildings



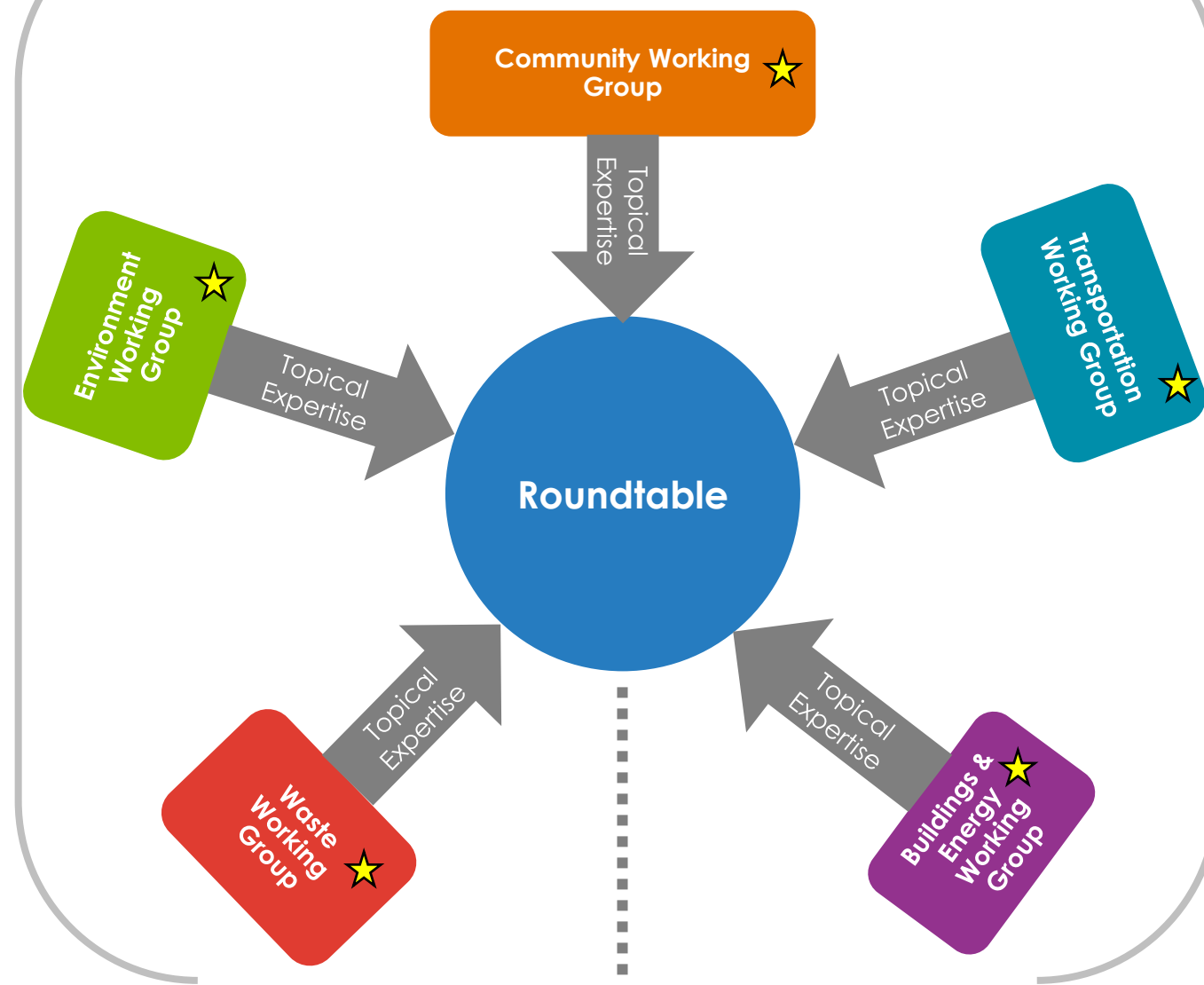
Neighborhoods



Health & Well-
Being



Roundtable =
shaping planning process and content



Community Engagement

Phase 1: Understanding Community Priorities

- ★ Listening sessions w/ frontline organizations (virtual)
- Virtual Ambassador Program
- Community survey

Phase 2: Developing Strategies

- ★ Frontline community workshops
- Communitywide Input Sessions #1

Phase 3: Refining Strategies

- ★ Frontline community workshops
- Communitywide Input Sessions #2

- ★ Neighborhood-Level Engagement
- Broader Community Engagement

Office of Sustainability/City government responsibilities throughout:

- Engagement & Communication ★
- Government Accountability ★

★ *Community priorities from listening process*

Questions?

Next Meeting Pre-Work

- **Diversity, Equity, and Inclusion Definitions**
- **USDN Equity Training Modules 1-3 (18 minutes)**
- **Share the Community-wide Survey**

Upcoming Meetings & Objectives

- **November 10, 2020 – Equity Training**
 - You will be able to understand and articulate language and concepts as it relates to race, racism and racial equity and the intersection between race, place and outcomes, and brief overview of systemic racism in Richmond related to neighborhoods, housing and the environment.
- **November 24, 2020 – RVA Green 2050 Vision & Equity Tool**
 - You will begin to create tool/checklist or some other framework that will help the technical working groups apply lived experience and community priorities when they draft climate action and resilience strategies.
- **December 8, 2020 Equitable Community Engagement**
 - You s will be able to understand and articulate the importance of equitable community engagement as well as the different types of community engagement methods and best practices for marginalized community in order to later develop their CE strategy for RVA Green 2050.