

RVAgreen 2050 Buildings & Energy Working Group
3/3/2021

Drafting Strategies #2



Equitable climate action for a healthy and resilient Richmond

Agenda

- Settling in and ground rules
- Review: RVAgreen 2050 structure and community priorities
- **Activity:** Refining strategies and applying the Equity Screening Tool
- Wrap-up and next steps

Today's Objectives

- Understand the RVAgreen 2050 community priorities and connection to climate action and resilience
- Apply the Equity Screening Tool to ensure draft strategies support community priorities
- Prepare draft strategies for review by City administration and RVAgreen 2050 Roundtable

Ground Rules / Group Expectations

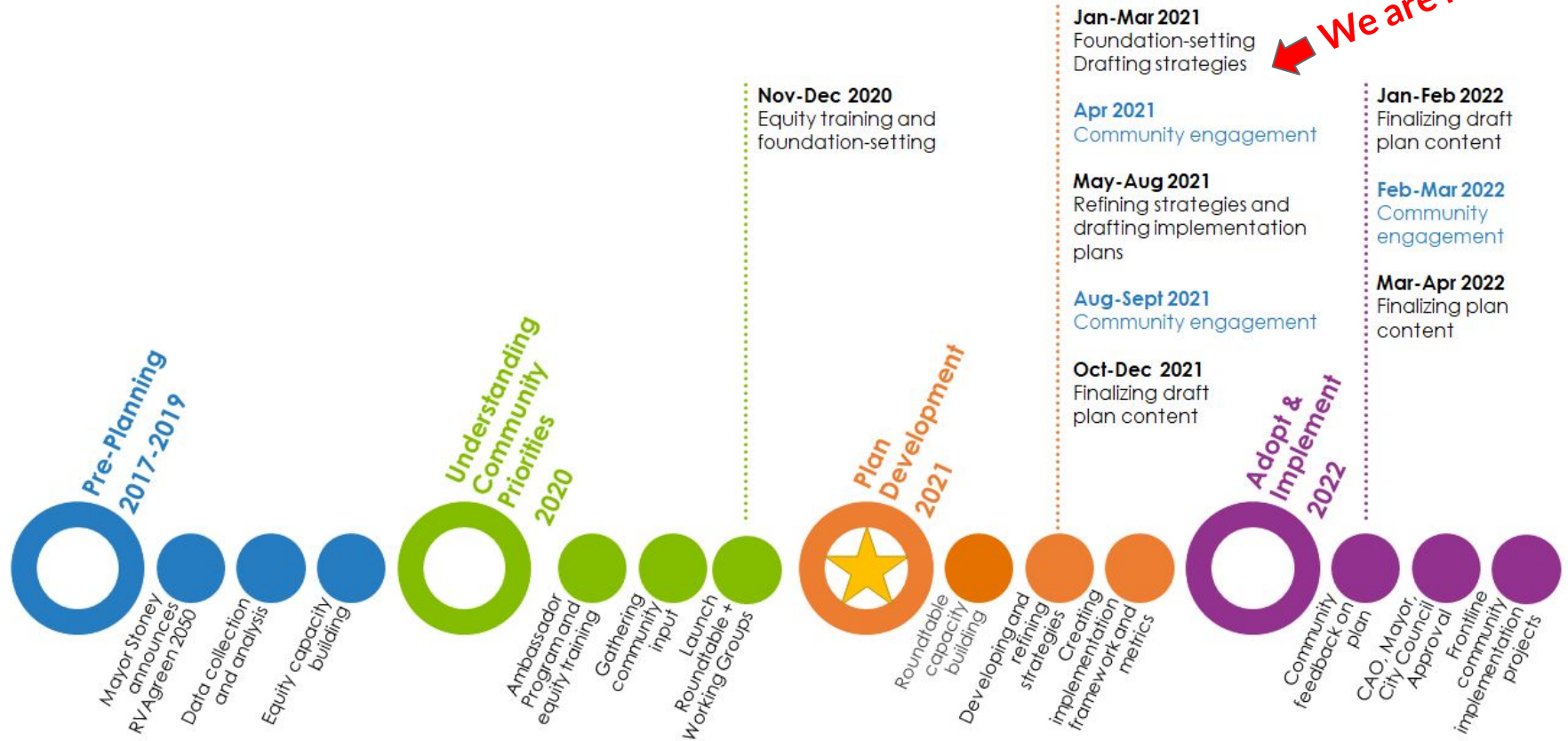


RVAgreen 2050 DRAFT Structure

Goals	What is the purpose of RVAgreen 2050?
Vision	What does the ideal future look like when RVAgreen 2050 is implemented?
Community Priorities	What cross-cutting public values do we want to center in our plan?
Pathways	What leverage points will lead us towards realizing and operationalizing the goals and community priorities?
Objectives	What are the long-term aims we want to accomplish, organized into the different pathways?
Strategies	What are the SMARTIE actions that will lead us toward our objectives?
Implementation Plans	How are we going to implement, measure progress, and ensure accountability in this plan?

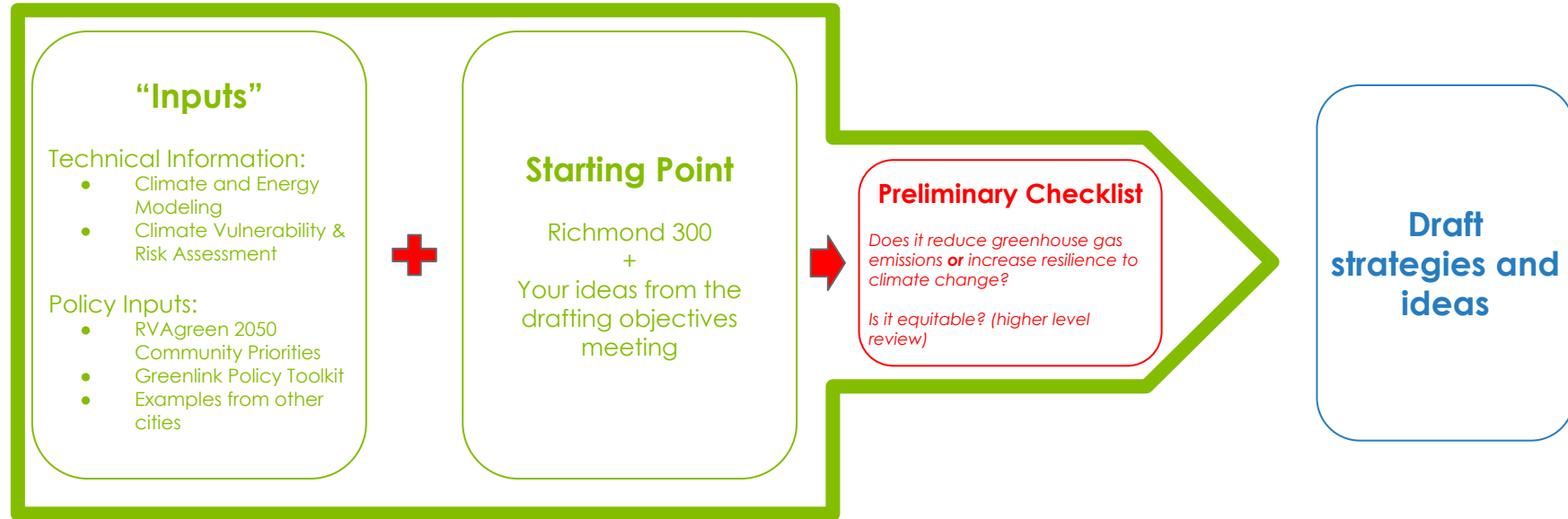


Process Overview



Strategy Drafting Process

At our previous meeting...



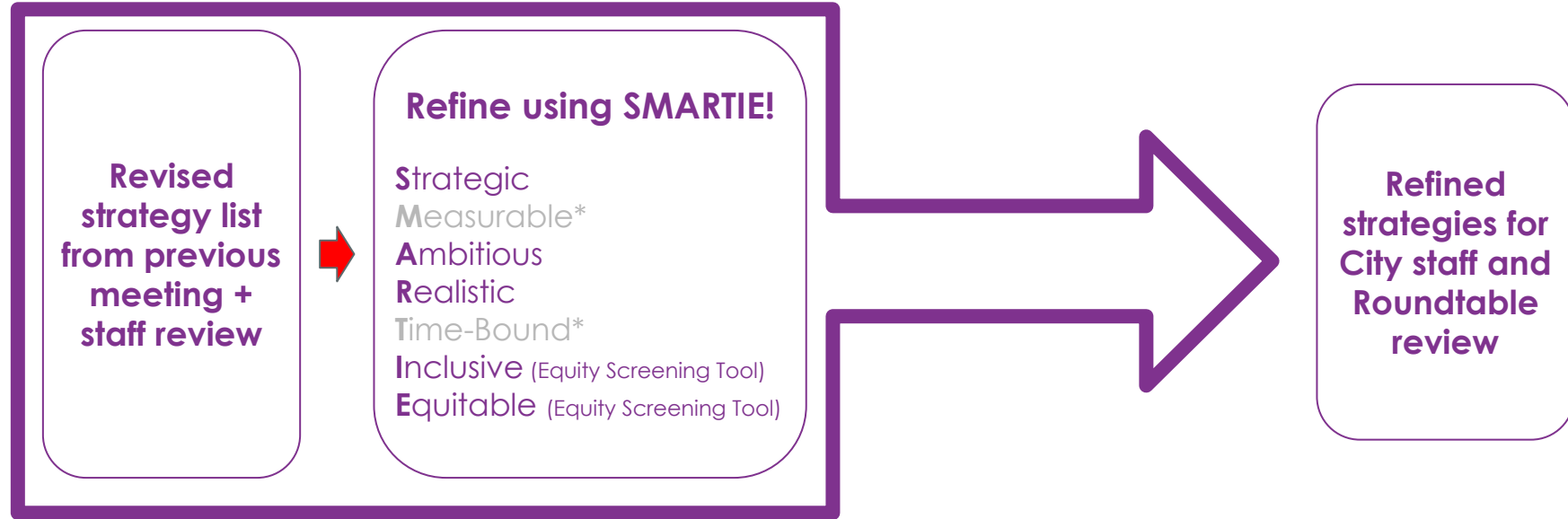
Strategy Drafting Process

Between then and now...



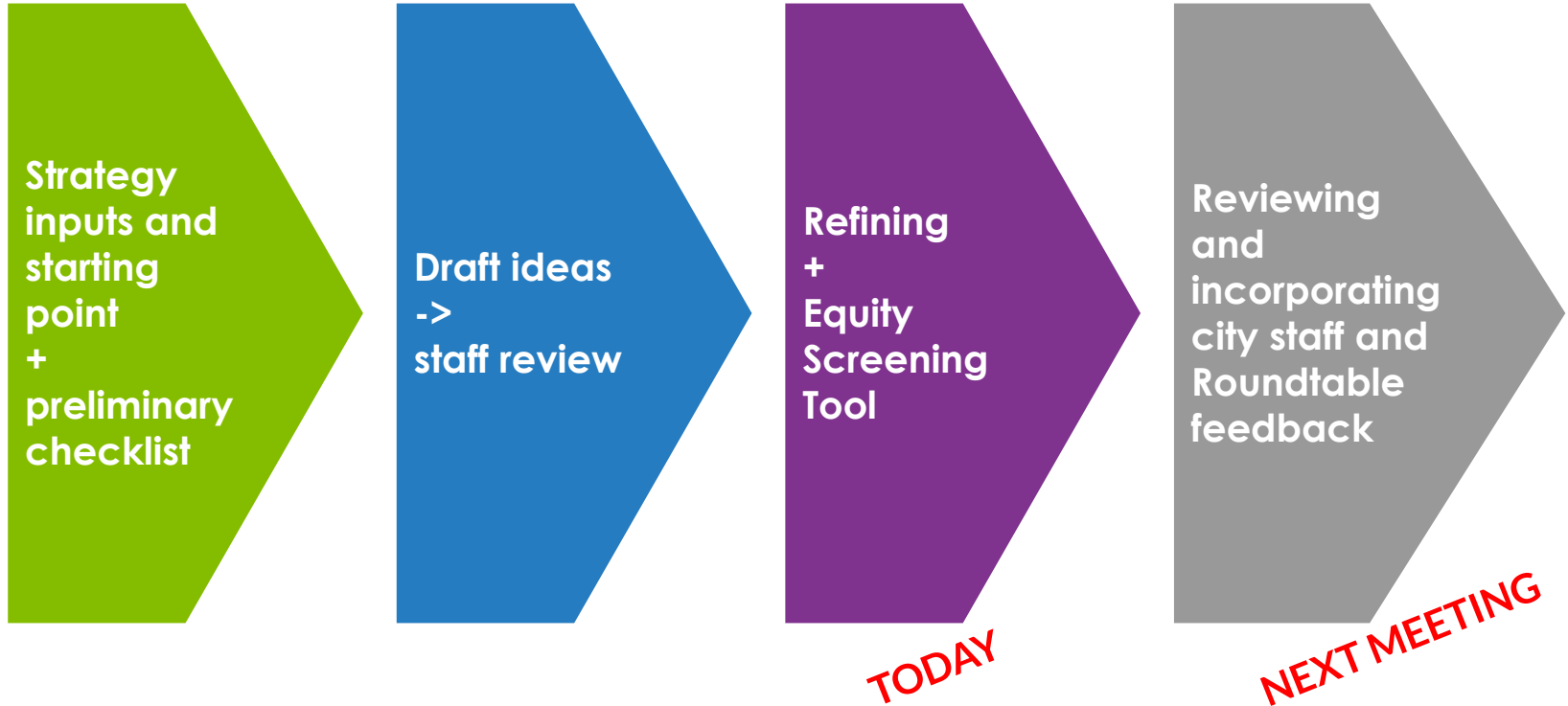
Strategy Drafting Process

Today's activity...



*We will focus on the metrics and timelines during our summer meetings

Strategy Drafting Process



Community Priorities



Racial Equity &
Environmental Justice



Engagement &
Communication



Government
Accountability



Community
Wealth



Housing &
Buildings



Neighborhoods



Health & Well-
Being

Community Priorities

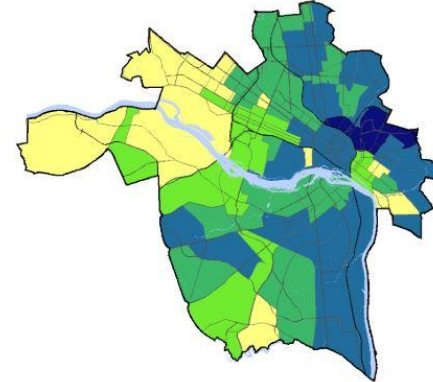
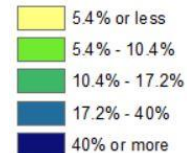


Transportation & Employment

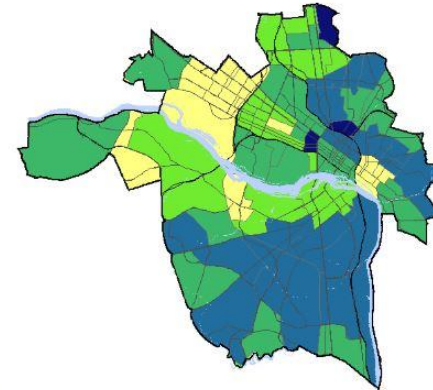
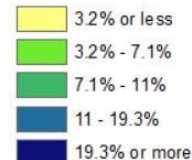
Richmonders want improved access to jobs (and better jobs)

- Only **2%** of jobs in the Richmond region are accessible within a 40-minute transit commute
- 90% of jobs are accessible within a 40-minute car commute
- Many Richmonders do not have access to a vehicle, especially in neighborhoods with higher proportions of Black and African American and Hispanic and Latino residents

Households without access to a vehicle
2016 American Community Survey



Unemployment rate
2016 American Community Survey



Community Priorities

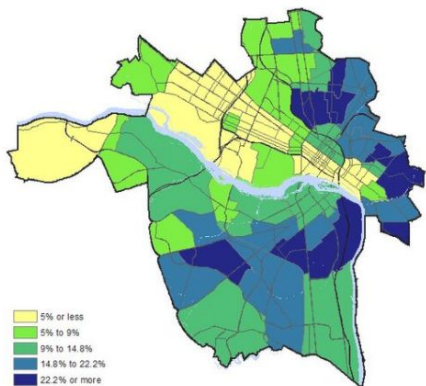
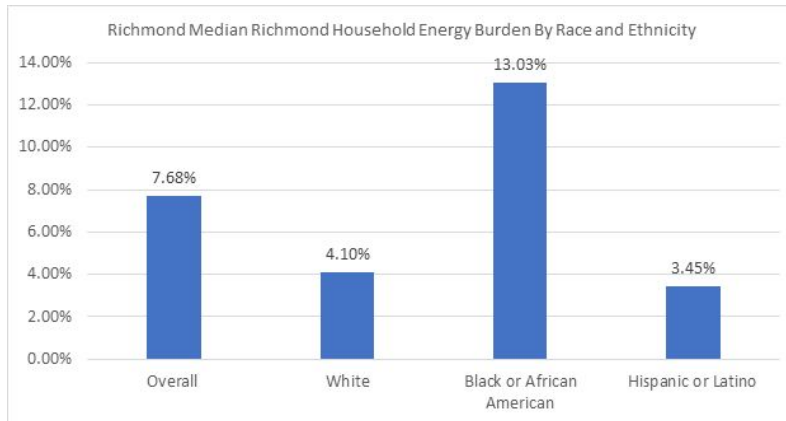


Housing & Buildings

Affordable Housing, Energy Burden, and Race/Ethnicity

Energy burden is a known contributing factor to evictions

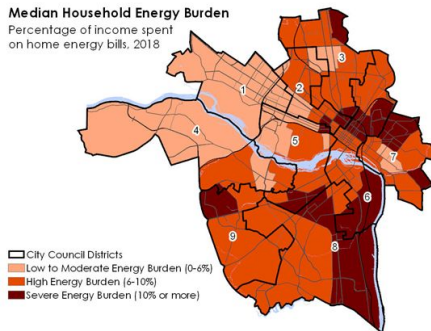
- US median household energy burden across 48 largest cities = 3.5%; Richmond = 7.7%
- Low-income, Black, and Hispanic or Latino households pay a much larger share of their income on energy bills



Median household energy burden:

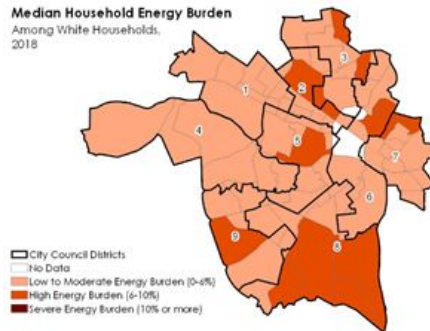
All households

Median Household Energy Burden
Percentage of income spent
on home energy bills, 2018



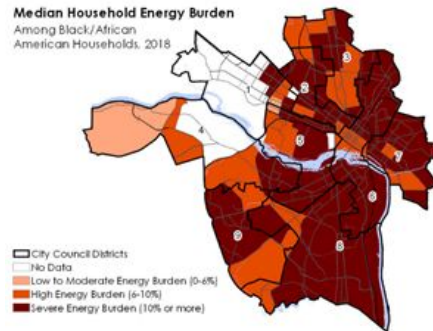
White Households

Median Household Energy Burden
Among White Households,
2018



Black/African American Households

Median Household Energy Burden
Among Black/African
American Households, 2018



Community Priorities

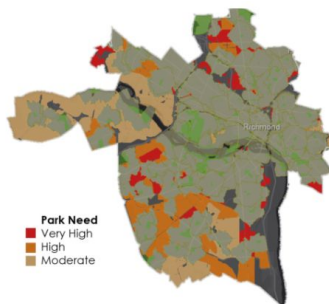
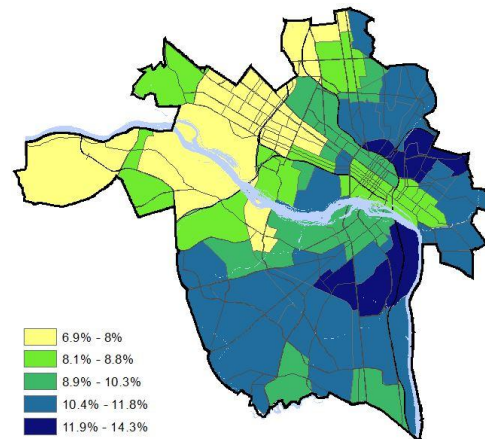


Natural Environment, Neighborhoods, and Health

Richmonders want safe, beautiful, and healthy neighborhoods

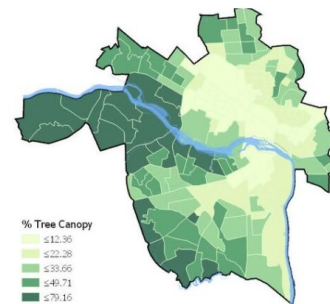
- Specific concerns included green space and parks access, physical and mental health, and flooding
- Due to historic and institutional racism, people of color are more likely to live in hotter neighborhoods where vulnerability to heat-related illnesses is higher

Adults with Asthma 2016 American Community Survey



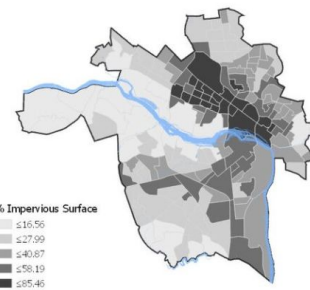
Areas Not Within 10-Minute Walk to a Park

Source: Trust for Public Land



Tree Canopy

Source: Jeremy Hoffman, Science Museum of Virginia



Impervious (Paved) Surface

Source: Jeremy Hoffman, Science Museum of Virginia

Community Priorities

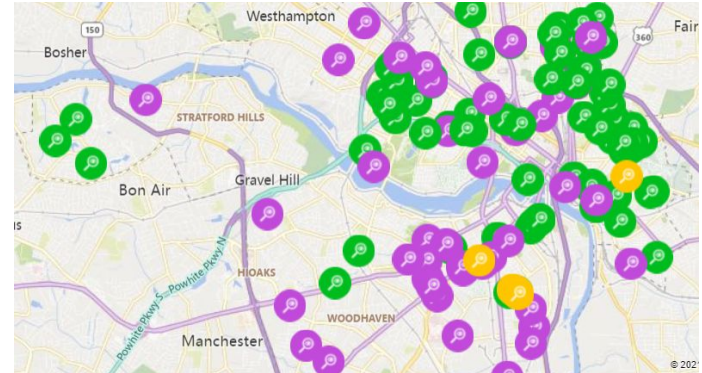


Waste, Neighborhoods, and Health

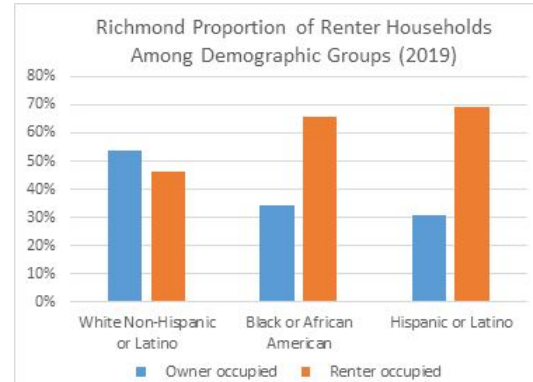
Richmonders want to live in safe and beautiful neighborhoods

- Concerns include litter, beautification, and health, among others
- Race** is the most significant predictor of whether a person lives near contaminated air, water, and soil
- Many **renter households** do not have access to curbside recycling

Requests for illegal dumping investigation (last year) RVA311



Proportion of renter households by race and ethnicity (2019)



Equity Screening Tool

The tool is organized by the 7 community priorities gathered during the summer 2020 listening process

Community Priority

Priority Considerations	Suggested Data & Metrics	
<ul style="list-style-type: none">• Use these questions to evaluate how• a proposed action addresses equity•	Consider these data and metrics to help answer the questions and/or assess a proposed action	
<table><tr><th>Additional Considerations</th></tr><tr><td><ul style="list-style-type: none">•••</td></tr></table>		Additional Considerations
Additional Considerations		
<ul style="list-style-type: none">•••		

**see glossary for additional information about this term*

An asterisk (*) indicates that a concept or term is listed in the glossary at the end of the tool

Equity Screening Tool



Community Wealth

Priority Considerations

- Does this support historically disenfranchised communities through workforce development, contracting opportunities, or increased diversity of employees and staff across sectors?
- Are the benefits accessible to households and businesses throughout the community - particularly communities of color, low-income populations, and minority, women, and emerging small businesses?
- Will this create workforce training opportunities that offer living wages and support a product or service wanted and needed in the community?



Housing & Buildings

Priority Considerations

- Will this reduce the number of families that are cost-burdened by housing and transportation?
- Does this reduce inequities in housing/building quality related to health and safety, such as issues related to lead, mold, air quality, etc.?
- Could this increase access to housing in general, and to homeownership?



Neighborhoods

Priority Considerations

- Could this expand access to healthy, clean, and accessible transportation?
- Could this increase access to quality green space in historically disenfranchised communities?
- Could this increase and ensure long-term access to amenities* in historically disenfranchised communities?



Health & Well-Being

Priority Considerations

- Does this address the health impacts of climate change*?
- Could this reduce food insecurity?
- Could this reduce stress, anxiety, and depression, and increase happiness?

Equity Screening Tool



Racial Equity & Environmental Justice

Priority Considerations

- Does this generate burdens*, either directly or indirectly, to historically disenfranchised communities*?
- Does this acknowledge, respect, protect, and honor the culture, assets, and traditions of historically disenfranchised communities?
- What communities would benefit* most from the proposed action?



Engagement & Communication

Priority Considerations

- Does this engage and empower historically disenfranchised communities in a meaningful, authentic, and culturally appropriate manner?
- How have communities (including historically disenfranchised) been engaged?
- Does this help foster effective long-term relationships and trust between diverse communities and local government?



Government Accountability

Priority Considerations

- Has the community asked for this? Is there a mechanism in place to change the action as needed based on indicators and community feedback?
- Is it clear who is accountable to whom and for what?
- What is the current data related to the proposed action, where does it come from, and what does this data tell us?

Today's Activity

Strategic

Measurable*

Ambitious

Realistic

Time-Bound*

Inclusive

Equitable

✗ Reduce residential water consumption.



Restructure residential water and wastewater fees and billing procedures to incentivize reduced water consumption.



Restructure residential water and wastewater fees and billing procedures to incentivize reduced water consumption **and use clear language and graphics to communicate fees and ways to reduce usage and charges.**

✗ Increase public parks access.



Establish an annual budget for the Parks, Recreation & Community Facilities Department to acquire new public park space.



Establish an annual budget for the Parks, Recreation & Community Facilities Department to acquire new public park space **in neighborhoods with the highest urban heat island impacts.**

*We will focus on the metrics and timelines during our summer meetings

Activity

- Divide into breakout rooms based on which objective you'd like to work on (sign up on next slide)
 - Objective 1 (Achieve climate neutrality and increase resilience in government buildings, infrastructure, and operations): Brianne
 - Objective 2 (Maximize energy efficiency, performance, and resilience in all existing buildings): Dawn
 - Objective 3 (Ensure all Richmonders have equitable access to affordable and renewable clean energy): Wendy
 - Objective 4: (Achieve climate neutrality and maximize resilience in all new buildings): David
- Tasks:
 - Fill in and refine strategy language
 - Go through Equity Screening Tool for each strategy and continue to refine
- If your group finishes, return to main room to be assigned to another breakout group

Which objective do you want to work on?

Objective 1: Achieve climate neutrality and increase resilience in government buildings, infrastructure, and operations

- Doug T
- Jeff C.
- Robert S.
- Adam Hohl
- Jeanette Endicott
-

Objective 2: Maximize energy efficiency, performance, and resilience in all existing buildings

- Michael Donnenberg
- Bill N
- Jessica Greene
- Andrew Grigsby
- Fred Bell
- Joe Sarver
-

Objective 3: Ensure all Richmonders have equitable access to affordable and renewable clean energy

- Erich friTz
- Carrie Hearne
- Leandra Jacobson
- Rob Andrejewski

Objective 4: Achieve climate neutrality and maximize resilience in all new buildings

- Write your name here!
- Josh Young
- Jonathan Snyder
- Irina Calos
- Ed Edmondson
- Don

5-minute break

*Go into breakout
rooms!*

Wrap-up and next steps

- Homework: consider additional language for drafting strategies
- Next meeting: Wednesday, March 24, 11:00 - 1:00
- NOW:
 - Fill out feedback survey
 - Share updates, upcoming events, and resources in the chat