

Richmond's COVID-19 recap



February 25, 2021

RHHD is now vaccinating...

- Healthcare personnel
- Long term care facility residents and staff
- People aged 65 years and older
- Frontline essential workers: front-facing police, fire, and hazmat, childcare/K-12 teachers/staff groups
- People living in correctional facilities, homeless shelters, and migrant labor camps



HOSPITALS



LONG-TERM CARE
FACILITIES



NON-HOSPITAL
FRONTLINE HEALTH
CARE WORKERS



PEOPLE
65 & OLDER



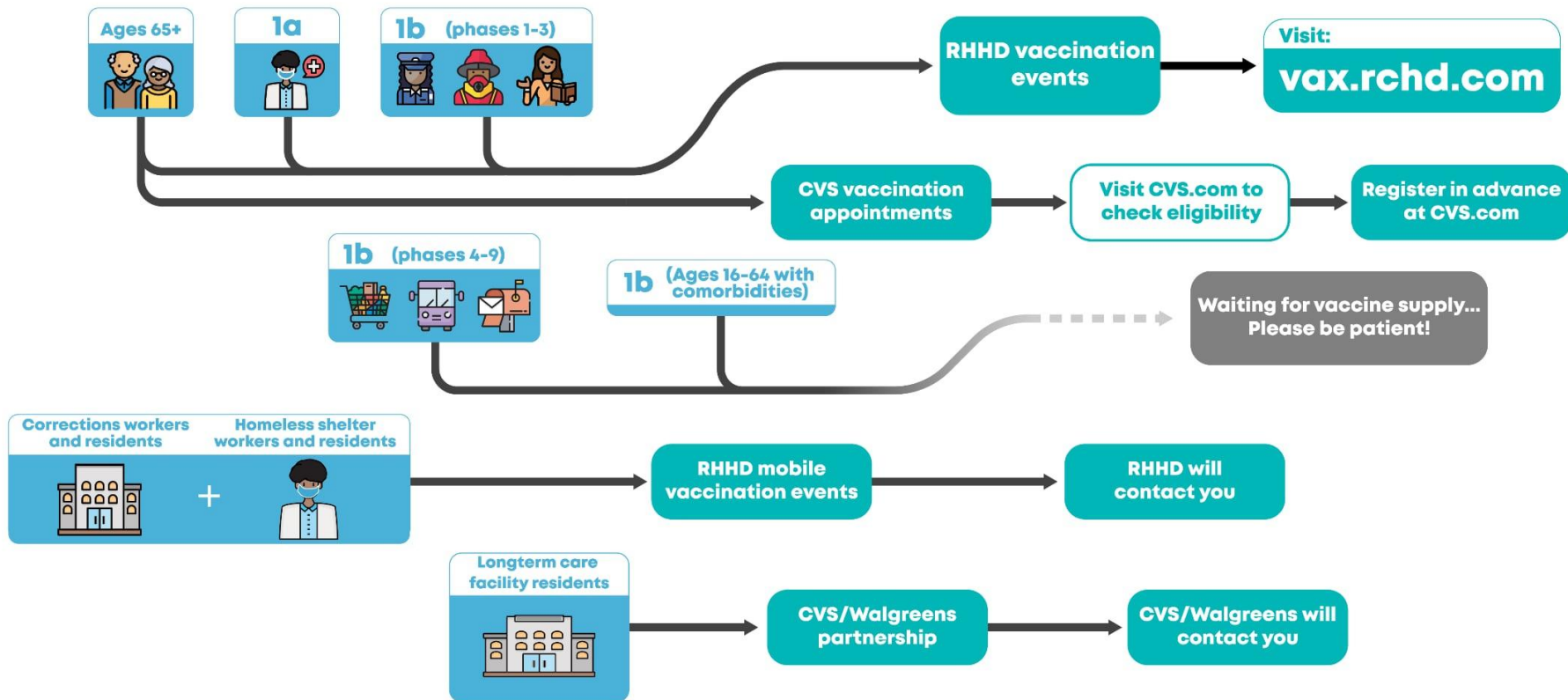
FRONTLINE ESSENTIAL
WORKERS



PEOPLE LIVING IN
CORRECTIONAL
FACILITIES &
HOMELESS SHELTERS



Current pathways to vaccination



Current vaccination modalities

- RHHD's large PODs (point of dispensing) *(1,000 - 2,000 people)*
- RHHD's PUPs (Pop-Up PODs) located in our communities *(200 - 500 people)*
- RHHD's mobile vax van events *(~100 people)*
- Regional events, hosted by the Richmond & Henrico Health Districts, Chesterfield Health District, and the Chickahominy Health District *(2,500 - 4,000 people)*
- Allocation and redistribution to pharmacies and safety-net partners
- *Coming soon: Retail Pharmacies, PCPs (minimal supply)*



This week's vaccination events

	2/21	2/22	2/23	2/24	2/25	2/26	2/27
Large POD			City Center <i>Essential Workers</i>	City Center <i>Essential Workers</i>	City Center <i>Essential Workers</i>	City Center <i>Essential Workers</i>	
PUPs				Southside <i>Seniors</i>			
Mobile Vax			Southside, City Center, East Henrico <i>Seniors</i>	Richmond City Jails	Henrico Jails West	Henrico Jails East	
Regional		East Henrico <i>Teachers, Police, Seniors</i>	East Henrico <i>Teachers, Police, Seniors</i>	East Henrico <i>Teachers, Police</i>	East Henrico <i>Teachers, Police</i> West Henrico <i>Seniors</i>	East Henrico <i>Teachers, Police</i>	East Henrico <i>Seniors</i>
Partners	Pharmacies, safety-net providers, health systems, urgent care, some primary care providers, etc.						

Last week's vaccine stats

	#
Vaccine doses received by RHHD	3,025
Doses redistributed	900
Direct allocation of vaccine to partners	2,750
Doses administered at Arthur Ashe events	4,449
Doses administered at mobile events	171
Doses administered at PUP events	396
Doses administed at regional events	1,674
Total RHHD total doses administed this week	6,690

This week's headlines



RICHMOND CITY
HEALTH DISTRICT

HENRICO COUNTY
HEALTH DISTRICT

[rchd.com](https://www.rchd.com)

Governor Northam eases some COVID-19 restrictions.

On Wednesday, February 24th, Governor Northam eased COVID-19 restrictions, lifting the existing 12:00–5:00 AM curfew. Additionally, alcohol sales can continue until 12:00 AM at which time restaurants must close. The Governor increased the number of people who can attend a private outdoor gathering from 10 to 25 and also increased the cap on outdoor entertainment venues to the smaller of 1,000 people or 30% of capacity. For rec sports played indoors, spectators must be limited to 25 person per field; for rec sports played outdoors the cap is the smaller of 250 people per field or 30% of capacity. Finally, summer camps can reopen starting May 1st.

These new rules go into effect on March 1st.



Walgreens begins vaccinations in the Richmond region.

As part of a federal partnership, Walgreens will begin vaccinating individuals aged 65 and up in the Richmond region. Walgreens joins CVS in this federal partnership, bringing hundreds of new doses of vaccine to the Richmond region.

Pending availability, eligible individuals can visit [walgreens.com/schedulevaccine](https://www.walgreens.com/schedulevaccine) to schedule an appointment.



Data deep dive



RICHMOND CITY
HEALTH DISTRICT

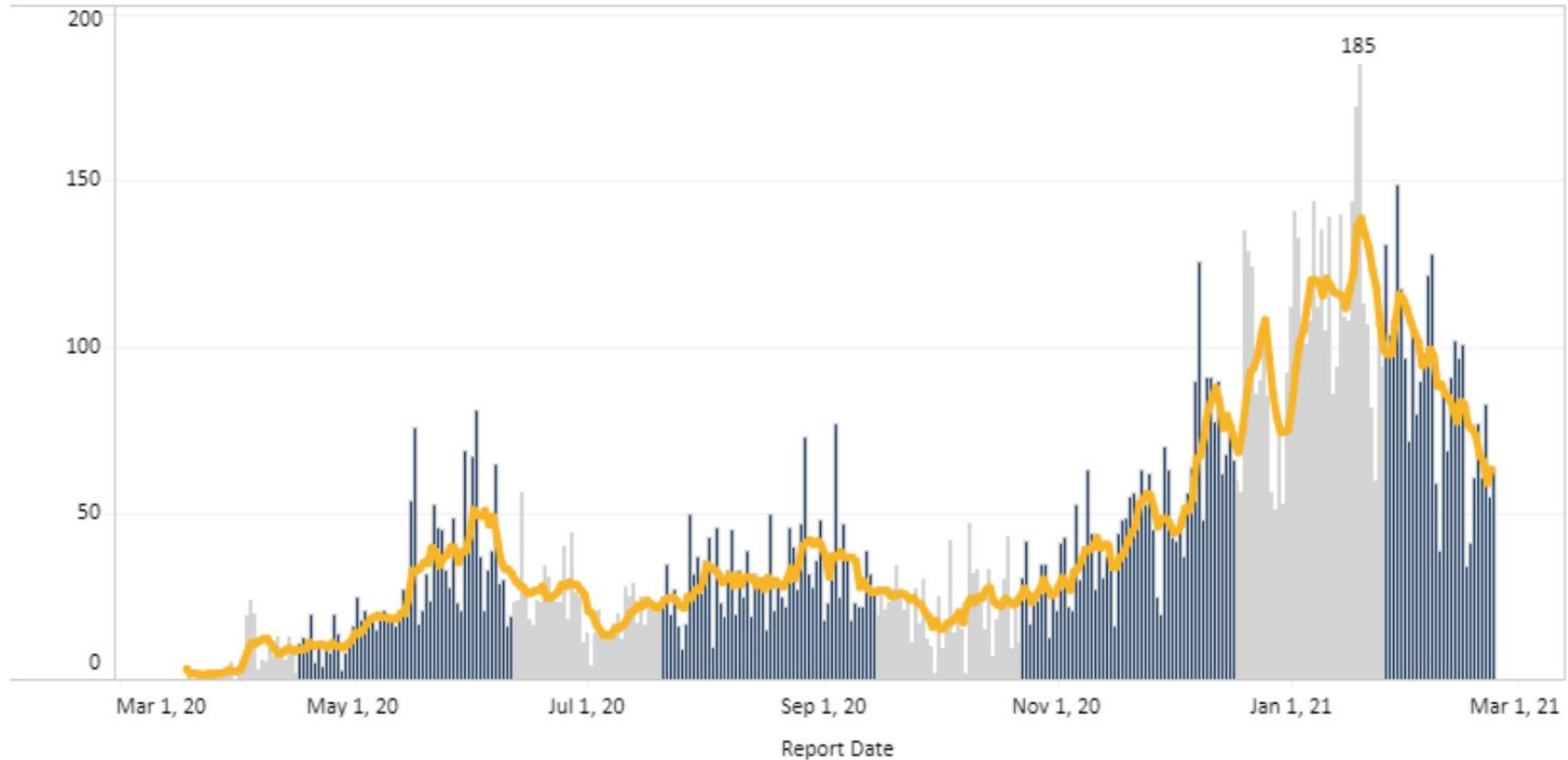
HENRICO COUNTY
HEALTH DISTRICT

rchd.com

COVID-19 snapshot

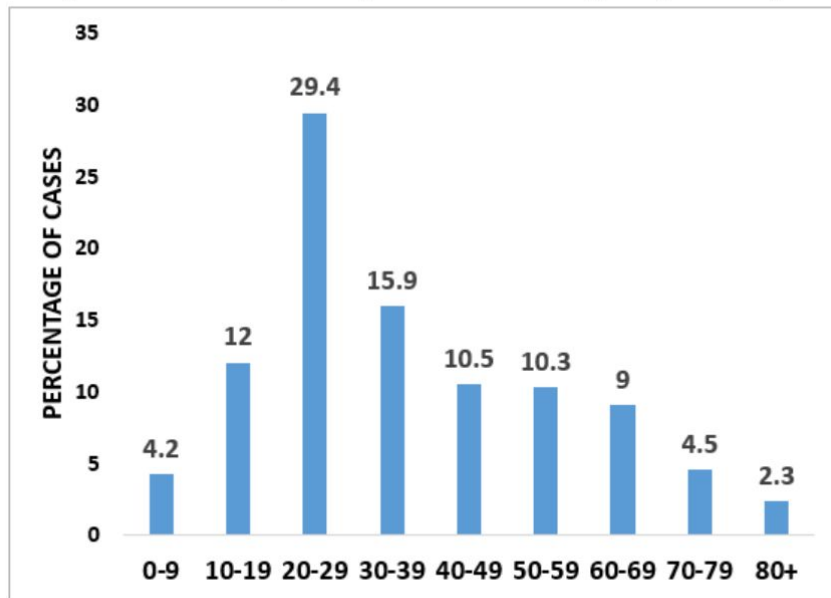
CASE STATUS	RICHMOND CITY	HENRICO COUNTY	VIRGINIA
New cases this week (Feb 22)	401	475	11962
All cases	14499	20946	565270
Confirmed cases	12035	15729	446642
Hospitalizations	650	813	22353
Deaths	137	356	6445
Probable cases	2464	5217	118628
Hospitalizations	20	28	1177
Deaths	24	34	1041
Case rate per 100,000	6292.0	6331.6	6622.6

Richmond's daily COVID-19 case counts



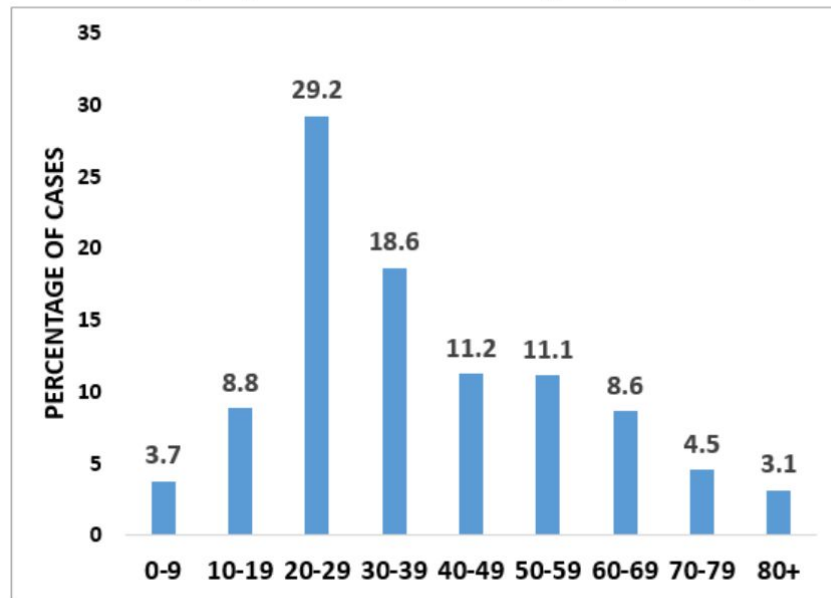
COVID-19 cases by age

COVID-19 case distribution by Age group in last 4 weeks
(Jan 19 – Feb 21, 2021) – Richmond City, VA (N=1807)



*Age is missing for 1.7% (n=31) of cases

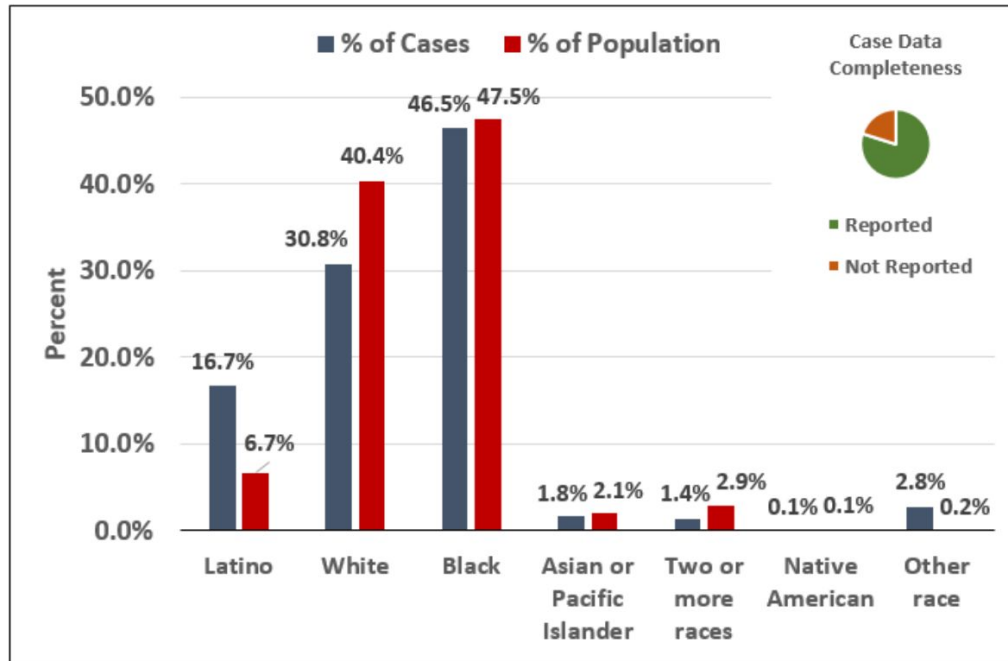
Cumulative COVID-19 case distribution by Age group as of
February 21, 2021 – Richmond City, VA (N=14499)



*Age is missing for 1.1% (n=163) of cases

COVID-19 cases by race and ethnicity

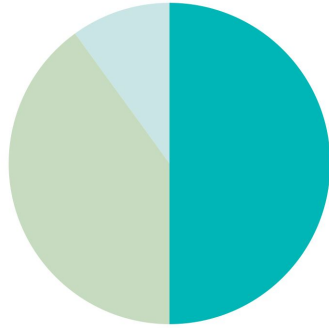
Cumulative COVID-19 case distribution by Race and Ethnicity as of February 21, 2021 – Richmond City, VA (N=14499)



*For race/ethnicity identification among cases, "Not Reported" comprises 20.1% (n=2919).

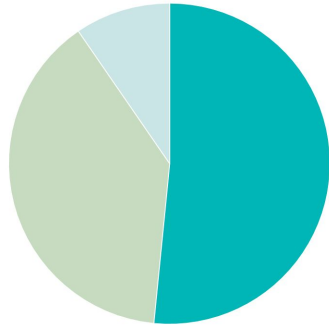
*Missing and Unknown Ethnicities were assumed to be of Non-Hispanic ethnicity

Vaccine distribution



Vaccine allocation goal for Richmond and Henrico

- 65+, **50%**
- Essential workers, **40%**
- Congregate care, **10%**

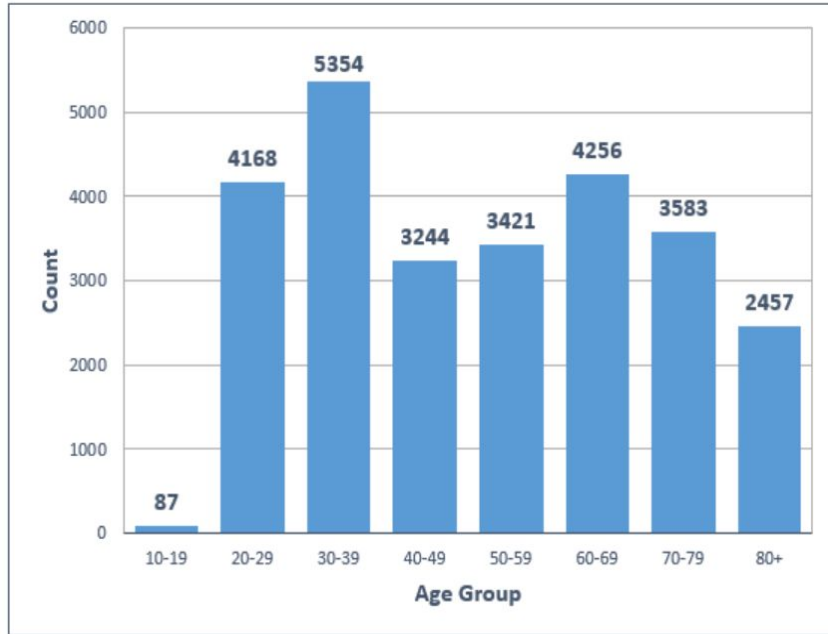


Vaccine allocation for Richmond and Henrico

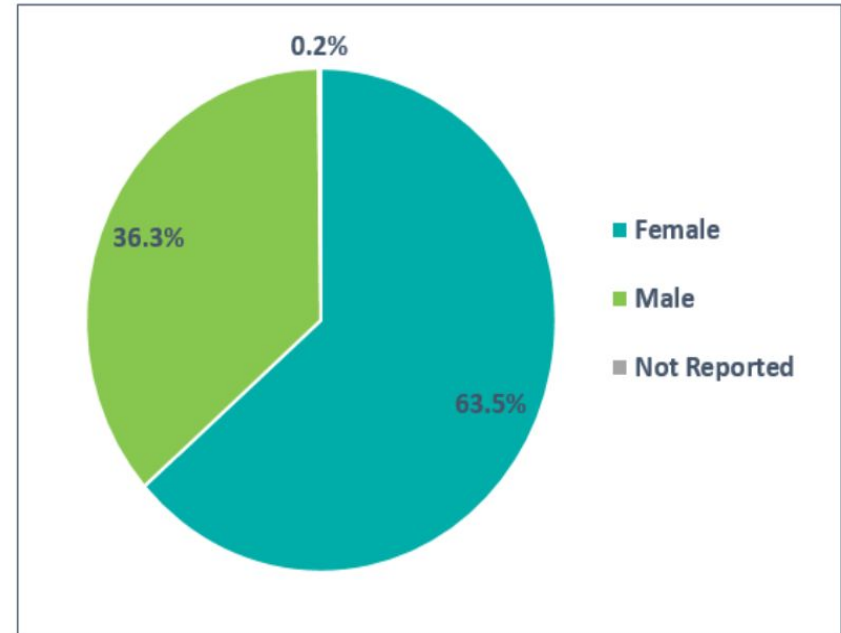
- 65+, **51.6%**
- Essential workers, **38.9%**
- Congregate care, **9.6%**

Vaccine recipients by age and sex

**Total Vaccine Recipients by Age Group in Richmond
– February 21, 2021 (N = 26570)**

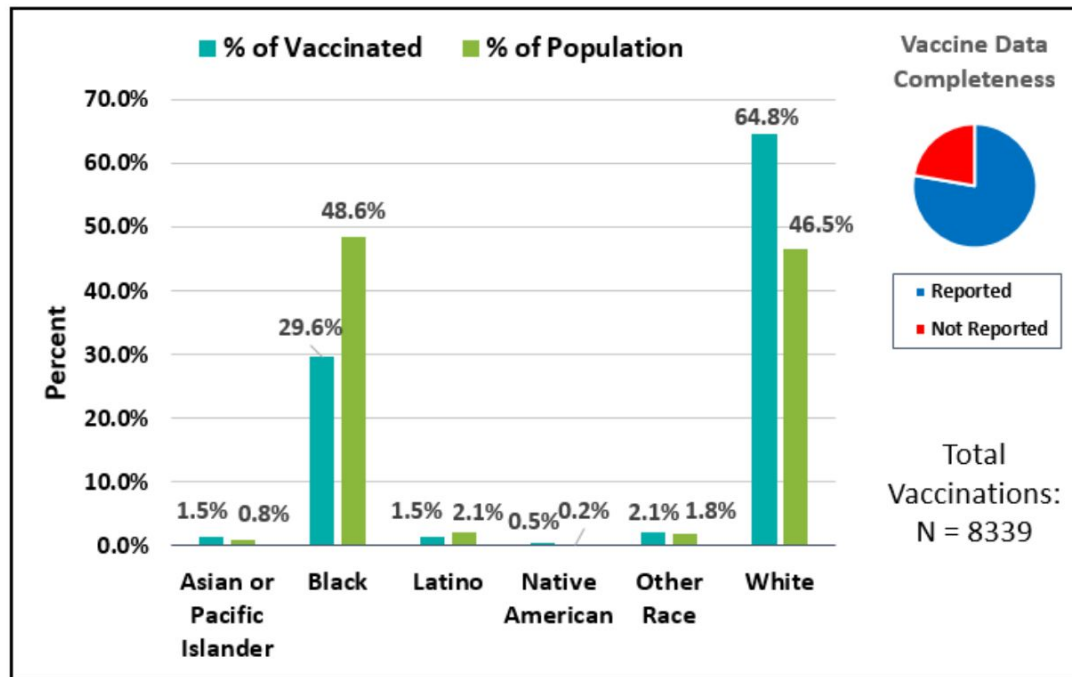


**Total Vaccine Recipients by Sex in Richmond
-- February 21, 2021 (N=26570)**



Vaccine recipients by race and ethnicity

Vaccine Recipients vs. Population 65 and Over by Race/Ethnicity
Percentages in Richmond – Dec 15, 2020 to Feb 21, 2021



*For race/ethnicity of vaccine recipients, "Not Reported" comprises 22.2% (n=1855).

*Missing and Unknown Ethnicities were assumed to be of Non-Hispanic ethnicity.