

RVAgreen 2050 Community Working Group
Friday, June 25th, 2021

Impacts & Indicators



Equitable climate action for a healthy and resilient Richmond

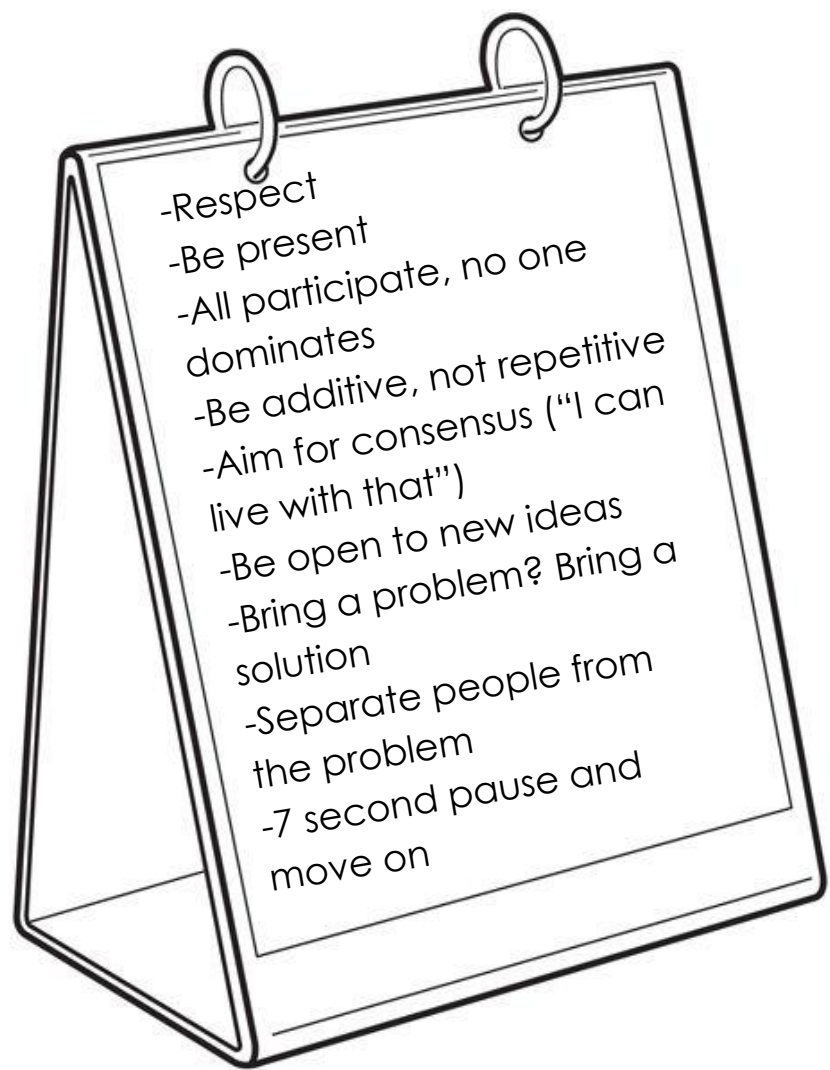
Agenda

- I. **Intro:** Settling in & ground rules
- II. **Review:** Revised strategies after the prioritization activity
- III. **Key concept:** impact mapping
- IV. **Activity:** Making impact maps for the prioritized strategies
- V. **Conclusion:** Wrap-up and next steps

Today's Objectives

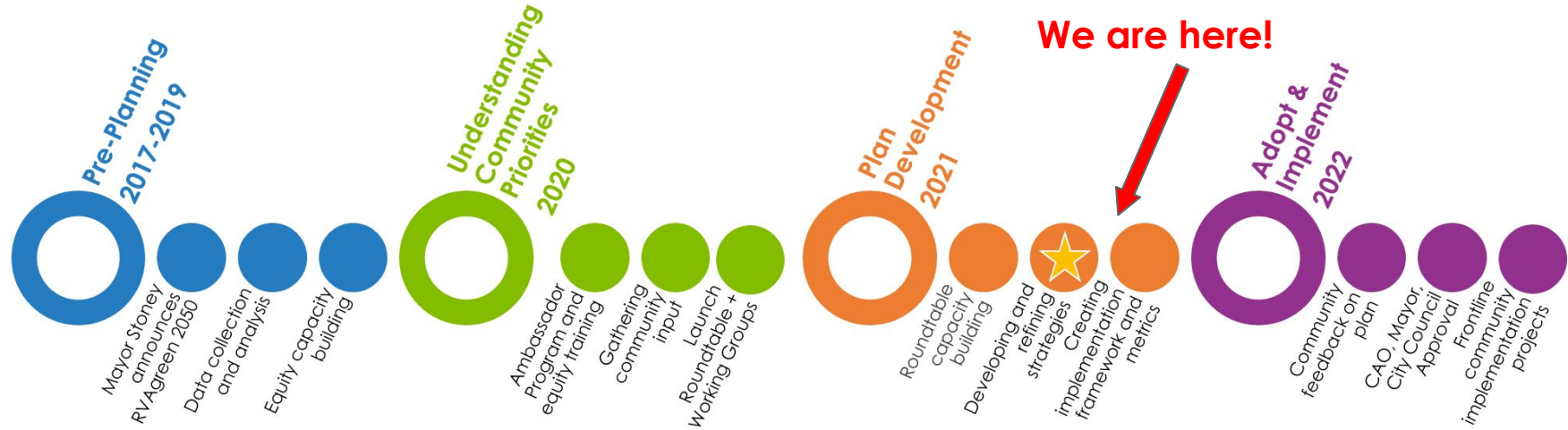
- Identify the potential impacts of the prioritized strategies
 - *What are we trying to impact?*
 - *What does success look like for each strategy and what is our shared understanding of what is achievable?*

Ground Rules / Group Expectations



- Respect
- Be present
- All participate, no one dominates
- Be additive, not repetitive
- Aim for consensus ("I can live with that")
- Be open to new ideas
- Bring a problem? Bring a solution
- Separate people from the problem
- 7 second pause and move on

Process Overview



Strategy Refinement Process Summer 2021



Strategy Prioritization

During our last meeting, we discussed:

- What strategies will most help us achieve our 2030 goals?
- Are we comfortable with the number of strategies to be prioritized?

Impacts and Indicators

Today, we will be asking the questions:

- What are the potential impacts of our strategies?
- How can those impacts inform the indicators that we use to measure success?

Implementation and Accountability

Over the next three meetings (**July 16**, **July 23**, & **August 6**), we will be thinking about:

- How will we equitably implement the plan?
- How will we ensure accountability and transparency?

RVAgreen 2050 DRAFT Structure

Goals	What is the purpose of RVAgreen 2050?
Vision	What does the ideal future look like when RVAgreen 2050 is implemented?
Community Priorities	What cross-cutting public values do we want to center in our plan?
Pathways	What leverage points will lead us towards realizing and operationalizing the goals and community priorities?
Objectives	What are the long-term aims we want to accomplish, organized into the different pathways?
Prioritized Strategies	What are the strategies that will help us achieve our goals and what are the SMARTIE actions that will lead us there?
Impacts	How will our strategies impact the community and lead to a more equitable, resilient, and adaptive Richmond?
Indicators	How will we measure success?
Implementation	How are we going to implement, measure progress, and ensure accountability in this plan?



Refined strategies

Strategy distribution after prioritization

	Total	Obj 1	Obj 2	Obj 3	Obj 4
B&E	12	4	3	3	2
Community	10	6	4		
Transportation	9	4	3	2	
Environment	9	3	3	2	1
Waste	9	2	3	2	2



Objective 1 Refined Strategies

Objective 1: Ensure that historically disinvested communities that are most affected by local climate impacts are centered and involved in the processes of developing, implementing, and evaluating solutions as a result of equitable communication and engagement strategies.

A. Affordable Housing Trust Fund – Develop and implement climate mitigation and resilience requirements for new affordable housing units funded with any amount of money from the Affordable Housing Trust Fund.

B. Business Incentives – Develop incentives for employers to facilitate GHG emission reduction programs including but not limited to telework and offsetting the cost of employee alternative transportation options.

C. Climate Action and Resilience Assistance - Create a guide to help small businesses, homeowners, and renters navigate City incentive programs, permitting, building code, zoning, and licensing processes related to reducing greenhouse gas emissions impact and/or enhancing resilience.

D. Climate Impact Grant - Create a climate impact fund to provide grants to help target communities prepare for extreme weather events, and pay residents and enable local nonprofits to work on climate action and resilience projects in target neighborhoods.

E. Community Benefits Scorecard and Agreements - City develop community benefit scorecard and agreements with target community members. Public scorecard used to evaluate projects and benefit agreements ensure community priorities which could include items such as creating jobs, utilizing local workforce development agencies to assist with hiring local, creating public open space, creating climate resilient low-income housing, and more.

F. Community Partnerships - Develop a climate action and resilience neighborhood partnerships program to build trust, share knowledge, identify and connect community projects to volunteers and resources by leveraging community connections, encouraging institutions to create neighborhood partnerships, and partnering with existing organizations to align projects with RVAgreen 2050 strategies.

Objective 2 Refined Strategies

Objective 2: Increase the Richmond community's social resilience to climate change.

A. Community Response Fund - Utilize the Central Virginia COVID-19 Response Fund and other eligible sources to provide direct and immediate assistance to community organizations that assist residents before, during, and after extreme weather events. Eligible expenses should include home repairs, healthcare costs, among others.

B. Community Stakeholders - Pay community members from historically disenfranchised communities that will be most impacted by climate change for their expertise and time in the process of developing, implementing and evaluating solutions as community leaders on climate action and resilience.

C. Organizational Collaboration - Connect and build capacity among community leaders, public health and healthcare infrastructure, local nonprofits, and businesses to collaboratively identify neighborhood leaders and resources for emergencies and develop community asset maps to increase climate resilience.

D. Resilience Hubs - Identify community facilities across the city, such as community centers and libraries, and provide funding to enable these resources to serve as resilience hubs and cooling centers to the community, particularly in areas with low-income, elderly, young, and homeless populations

Strategy Impact mapping

Purpose of Impact Mapping

What? A framework for describing and measuring the wider impacts of urban climate action

Why? Strategies produce multiple benefits which can become powerful tools for more & better designed climate actions and are critical to reducing barriers to action.

The **distribution** of an impact - whether it is equitable - is at the core of this approach.

For Example...

If the net growth in jobs was focused on a part of the population where employment is already high, such as high-skilled workers, but detracts from those in areas of high unemployment, this could be inequitable and possibly damaging.

PATHWAYS STEPS

ACTION



OUTPUTS



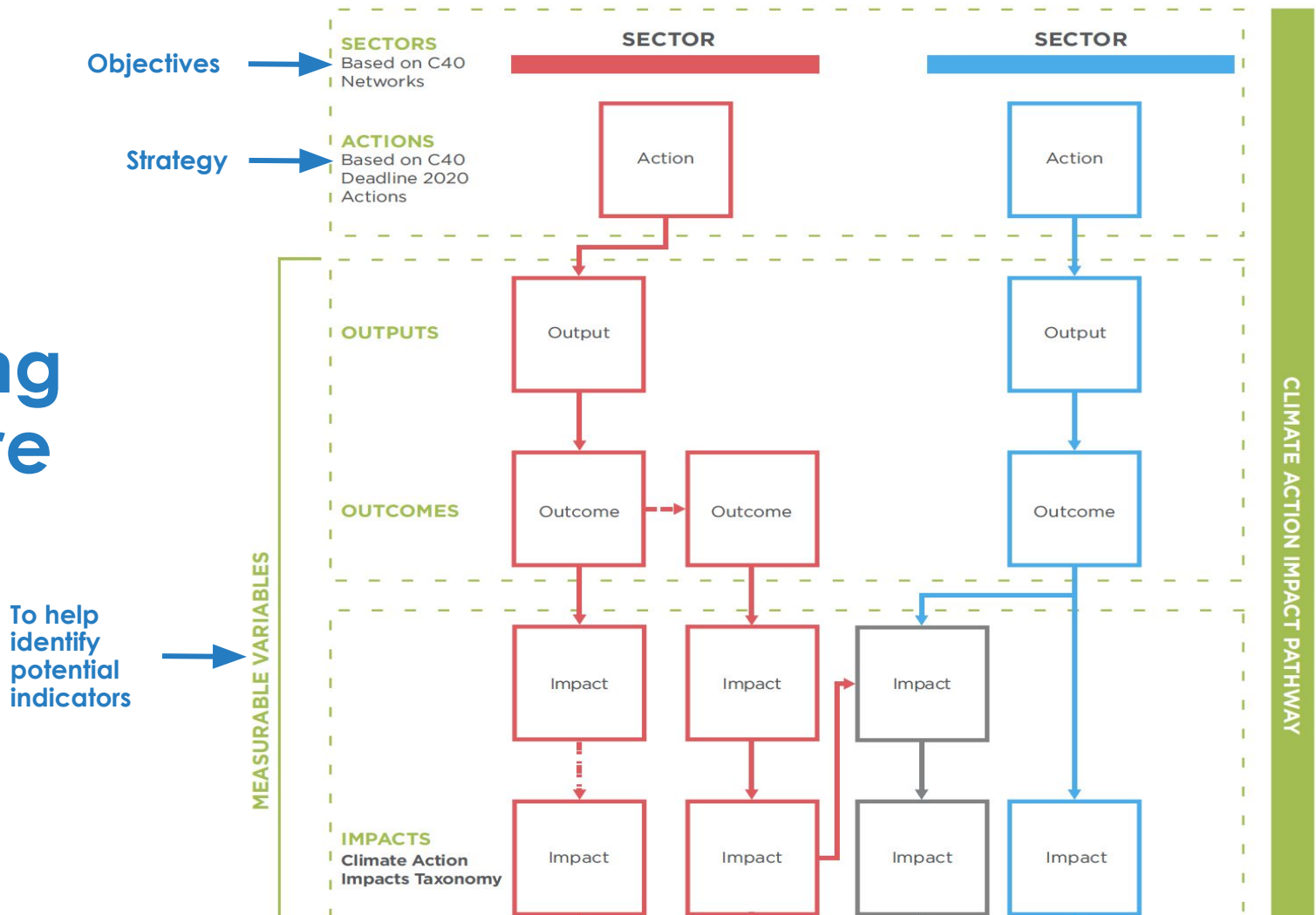
OUTCOMES



IMPACTS
(costs and benefits)

“This is the evidence that urban stakeholders need to guide and make the case for climate action.”

Mapping Structure



Structure of impact maps

Sector	The area of the action/strategy; these are analogous to the objectives that fall under each Pathway.
Strategies	Any policy, program, or investment initiated with the intention to provide some contribution to equitable climate mitigation or adaptation.
Output(s)	What a strategy produces, such as a provided service, facility, infrastructure, or a financial tool.
Outcomes	The change generated by the output; it is necessary for the intended impact to occur.
Impacts	The medium- or long-term effect of the outcome (e.g., reduced traffic congestion, reduced energy bills, reduced ground level ozone).

Types of impacts

The 3 Pillars of Sustainability

Social

Economic

Environmental

Racial Equity & Environmental Justice: *Potential to promote racial equity and support historically disenfranchised communities*

Government Accountability: *Potential to promote government accountability and transparency*

Community Wealth: *Potential to build community wealth and Increase jobs and education access*

Housing & Buildings: *Potential to expand affordable housing and reduce housing cost burden*

Neighborhoods: *Potential to support beautiful and safe neighborhoods*

Health: *Potential to promote physical and mental health and well-being*

Engagement & Communications: *Potential to support equitable engagement and communication*

THEME	IMPACT GROUP	IMPACT	SDG #	SPECIFIC GROUP	DESCRIPTION
ECONOMIC IMPACTS	Environmental quality	Biodiversity	14, 15, 11	Biodiversity protection	Protection of ecosystems and species.
				Ecosystem services	Value of services offered by ecosystems, and impact on these ecosystems and services.
				Biological diversity	""Biological diversity" means the variability among living organisms from all sources including, inter alia, terrestrial, marine and other aquatic ecosystems and the ecological complexes of which they are part; this includes diversity within species, between species and of ecosystems." (Convention on Biological Diversity, Article 2). This impact relates to changes to biological diversity and urban green surface.
				Species population	(Changes to) the size of a species population.
		Climate Change	7, 11, 13	Greenhouse gas emission	Volume of greenhouse gases, which drive global warming, emitted from man-made sources
		Air quality	3, 11, 15	Indoor air pollution	Air pollution in buildings and households.
				Outdoor air pollution	Air pollution in cities.
				Olfactory pollution	"Pollution produced by gaseous emissions in the atmosphere that, even in very small amounts, may cause injuries or a condition of general unease or sickness to persons living in the vicinity." (European Environment Information and Observation Network)
		Noise	No related SDG	Indoor noise	Noise in buildings.
				Outdoor noise	Noise due to traffic and other urban activities.
		Soil quality	3, 11, 12, 15	Soil pollution	Contamination of the soil due to the presence of pollutants such as heavy metals and chemicals (herbicides, industrial wastes, and others).
				Soil degradation	"Change in the soil health status resulting in a diminished capacity of the ecosystem to provide goods and services for its beneficiaries." (Food and Agricultural Administration)
				Soil texture	Size and type of soil particles composing the land, and its impact in land subsidence and stability.

Example Community impact map

Objective 2: Increase the Richmond community's social resilience to climate change.

Strategy: **Resilience Hubs** - Identify community facilities across the city, such as community centers and libraries, and provide funding to enable these resources to serve as resilience hubs and cooling centers to the community, particularly in areas with low-income, elderly, young, and homeless populations

Strategy

Output(s)

Outcomes

Impacts

Resilience
Hubs

Identify
community
facilities

Public list of
community
centers &
libraries

Increase
partnership with
public facilities
to provide
information and
education
about (and
shelter during)
extreme
weather events

Better prepared
sites during
climate impacts

Geographic
redistribution of
resources

Neighborhood
level
engagement

Increased public
safety

Provide
funding for
facilities

Education
pamphlets

Climate action
and resilience
guides

Increased
access to
programs

Increased
awareness on GHG
emission reduction

Increased
geographic location
of resources

Activity

Activity

Develop maps of outputs, outcomes, and impacts for each strategy using the Urban Climate Action Impacts Framework structure

Breakout room discussion - 30 minutes per strategy-briefly identify outputs and outcomes and concentrate on impacts

1. For the strategy, consider scale and scope, as well as business as usual scenario, i.e. what would it look like if the strategy were not implemented to provide context
2. What are the **outputs** of this strategy? *What are direct, tangible results of the strategy?*
3. What are the **outcomes** of this strategy? What is the change generated by the output?
4. What are the potential **impacts** that could result from this strategy? *Remember to integrate equity considerations. Who are key stakeholders? What are their priorities and concerns? How is the strategy potentially impacting them-positively or negatively?*
5. Which impacts are **most significant**?

Activity Groups

Khilia	JaVonne	Kendra	David
<ol style="list-style-type: none">1. Community Benefits Scorecard and Community Agreements (Obj 1)2. Affordable Housing Trust Fund (Obj 1)	<ol style="list-style-type: none">1. Climate Action and Resilience Assistance (Obj 1)2. Community Stakeholders (Obj 2)	<ol style="list-style-type: none">1. Community Partnerships (Obj 1)2. Organizational Collaboration (Obj 2)	<ol style="list-style-type: none">1. Community Response Fund (Obj 2)2. Climate Impact Grant (Obj 1)[24]
Sign-Up <ul style="list-style-type: none">• Sarah S• Nikhil	Sign-Up <ul style="list-style-type: none">• Anja	Sign-Up <ul style="list-style-type: none">• Kate• Richard Sebastian	Sign-Up <ul style="list-style-type: none">• Bill Lawson• Sara Barton

*Go into breakout
rooms!*

Objective 1:

Ensure that historically disinvested communities that are most affected by local climate impacts are centered and involved in the processes of developing, implementing, and evaluating solutions as a result of equitable communication and engagement strategies.

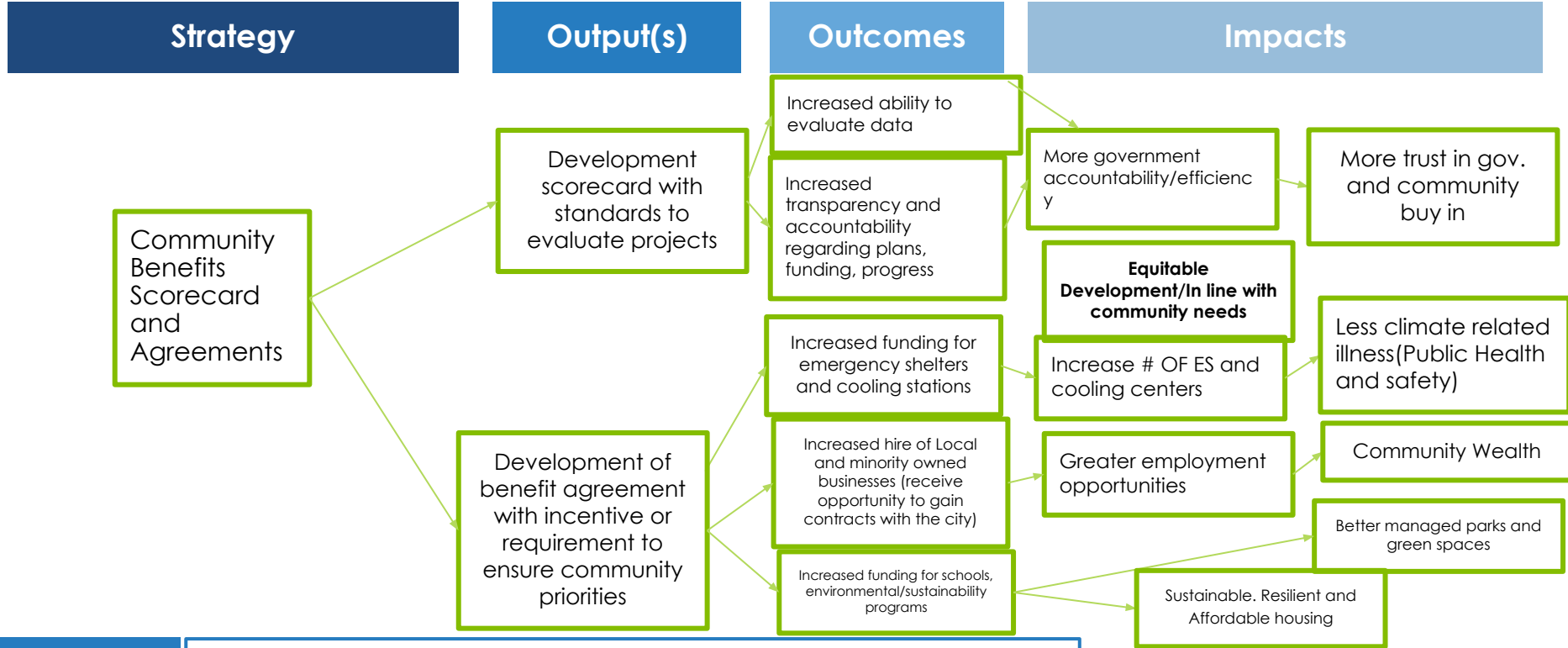
Objective 2:

Increase the Richmond community's social resilience to climate change.

Khilia's Group

Objective 1: Ensure that historically disinvested communities that are most affected by local climate impacts are centered and involved in the processes of developing, implementing, and evaluating solutions as a result of equitable communication and engagement strategies.

Strategy: Community Benefits Scorecard and Agreements - City develop community benefit scorecard and agreements with target community members. Public scorecard used to evaluate projects and benefit agreements ensure community priorities which could include items such as creating jobs, utilizing local workforce development agencies to assist with hiring local, creating public open space, creating climate resilient low-income housing, and more.



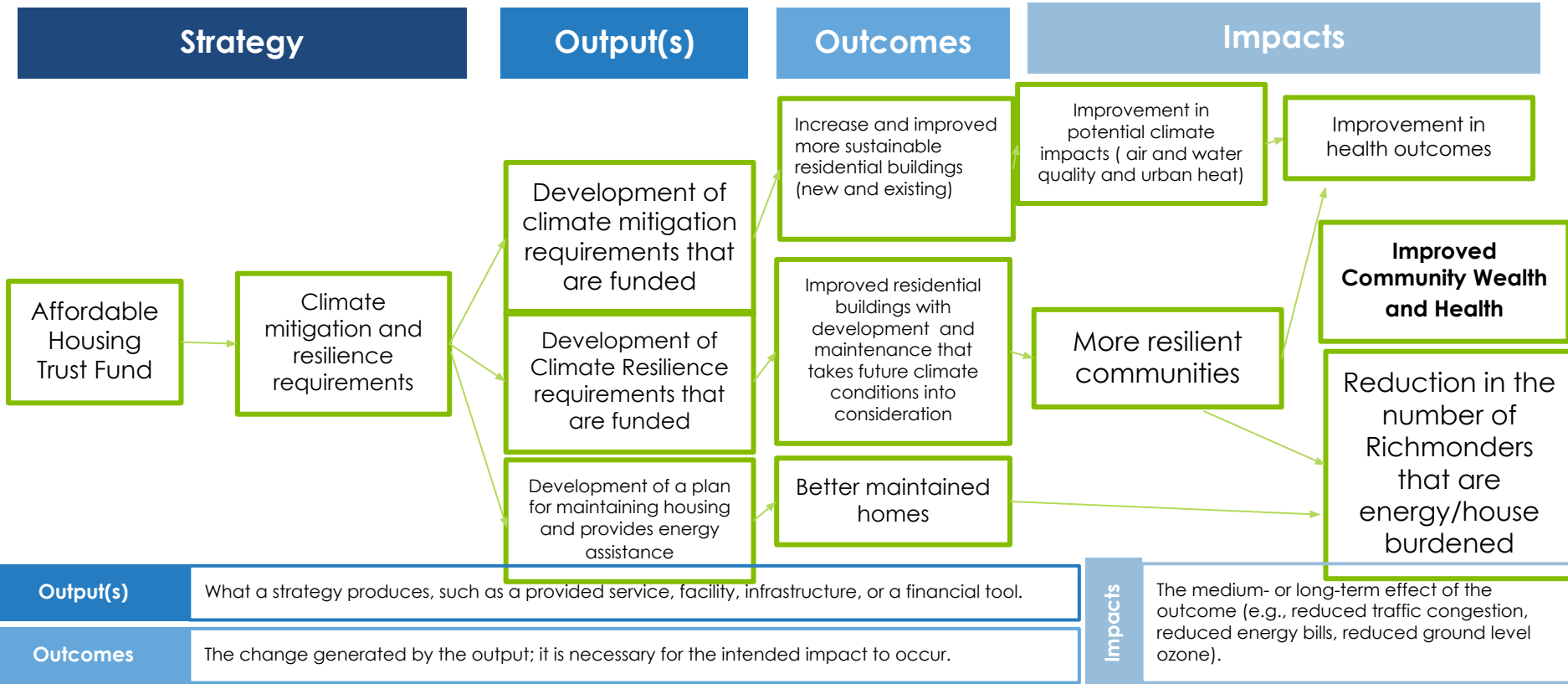
Output(s)

What a strategy produces, such as a provided service, facility, infrastructure, or a financial tool.

What a strategy produces, such as a provided service, facility, infrastructure, or a financial tool.

Objective 1: Ensure that historically disinvested communities that are most affected by local climate impacts are centered and involved in the processes of developing, implementing, and evaluating solutions as a result of equitable communication and engagement strategies.

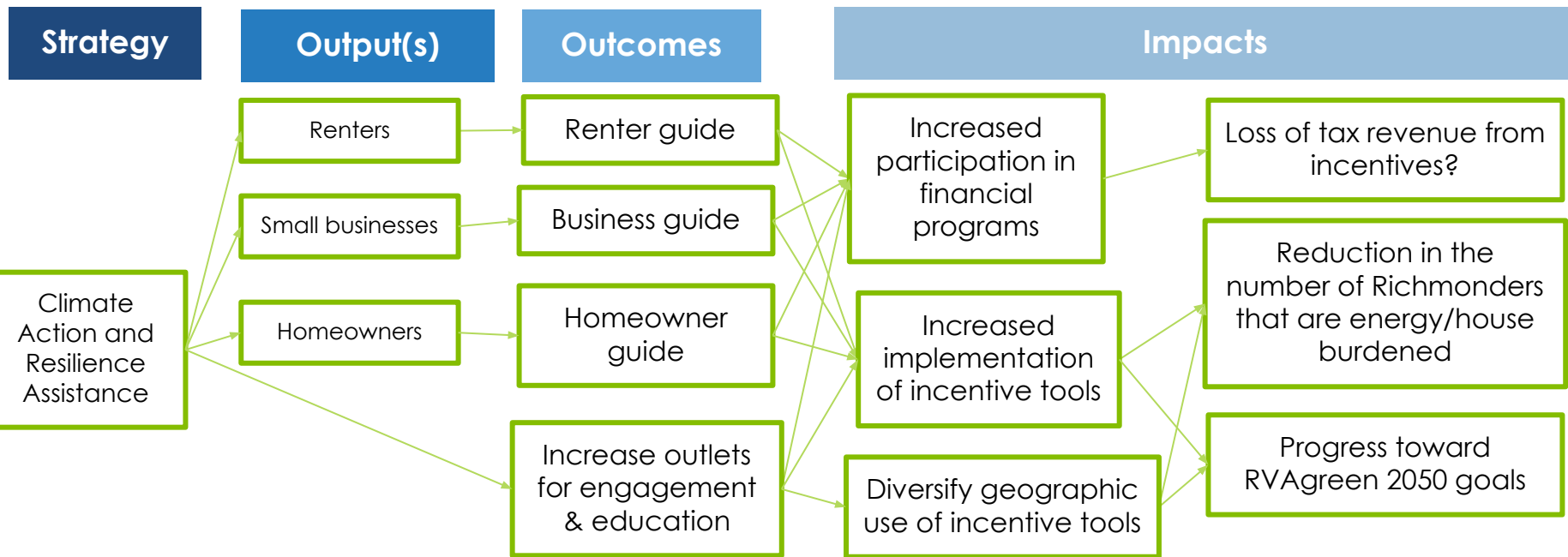
Strategy: Affordable Housing Trust Fund – Develop and implement climate mitigation and resilience requirements for new affordable housing units funded with any amount of money from the Affordable Housing Trust Fund.



JaVonne's Group

Objective 1: Ensure that historically disinvested communities that are most affected by local climate impacts are centered and involved in the processes of developing, implementing, and evaluating solutions as a result of equitable communication and engagement strategies.

Strategy: Climate Action and Resilience Assistance - Create a guide to help small businesses, homeowners, and renters navigate City incentive programs, permitting, building code, zoning, and licensing processes related to reducing greenhouse gas emissions impact and/or enhancing resilience.



Output(s)

What a strategy produces, such as a provided service, facility, infrastructure, or a financial tool.

Outcomes

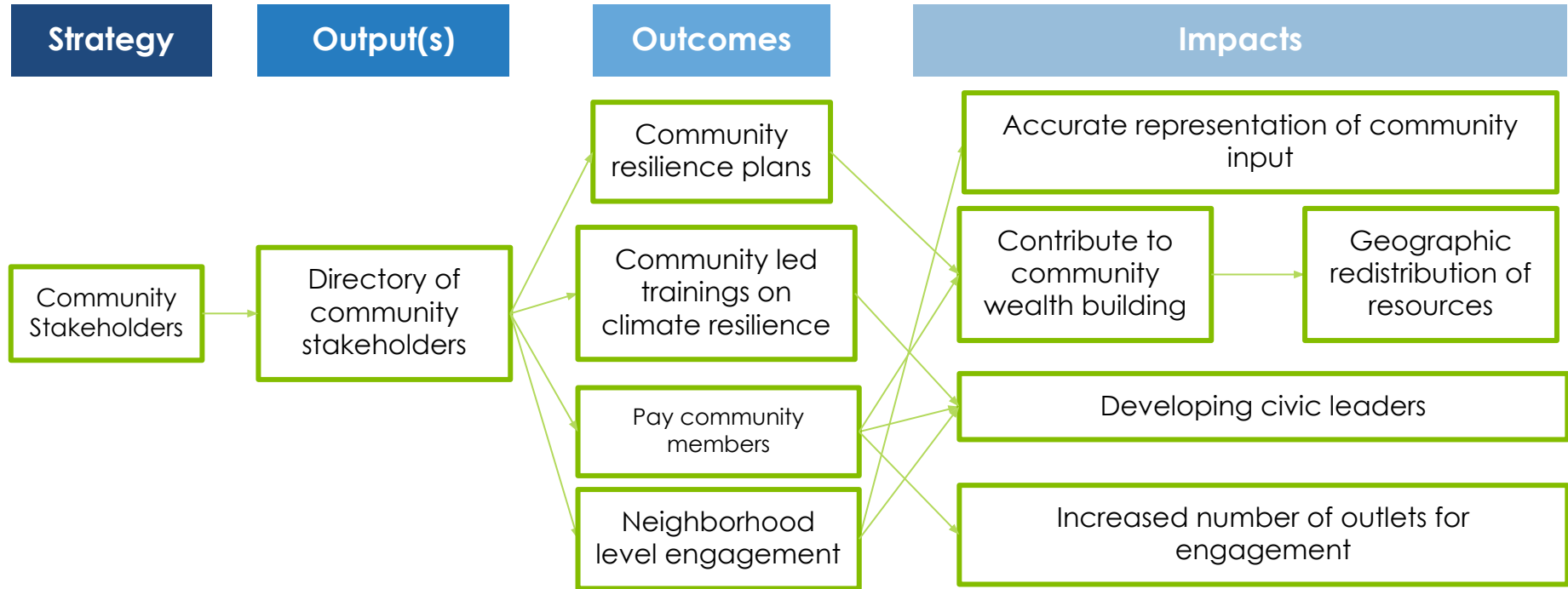
The change generated by the output; it is necessary for the intended impact to occur.

Impacts

The medium- or long-term effect of the outcome (e.g., reduced traffic congestion, reduced energy bills, reduced ground level ozone).

Objective 2: Increase the Richmond community's social resilience to climate change.

Strategy: **Community Stakeholders** - Pay community members from historically disenfranchised communities that will be most impacted by climate change for their expertise and time in the process of developing, implementing and evaluating solutions as community leaders on climate action and resilience.



Output(s)

What a strategy produces, such as a provided service, facility, infrastructure, or a financial tool.

Outcomes

The change generated by the output; it is necessary for the intended impact to occur.

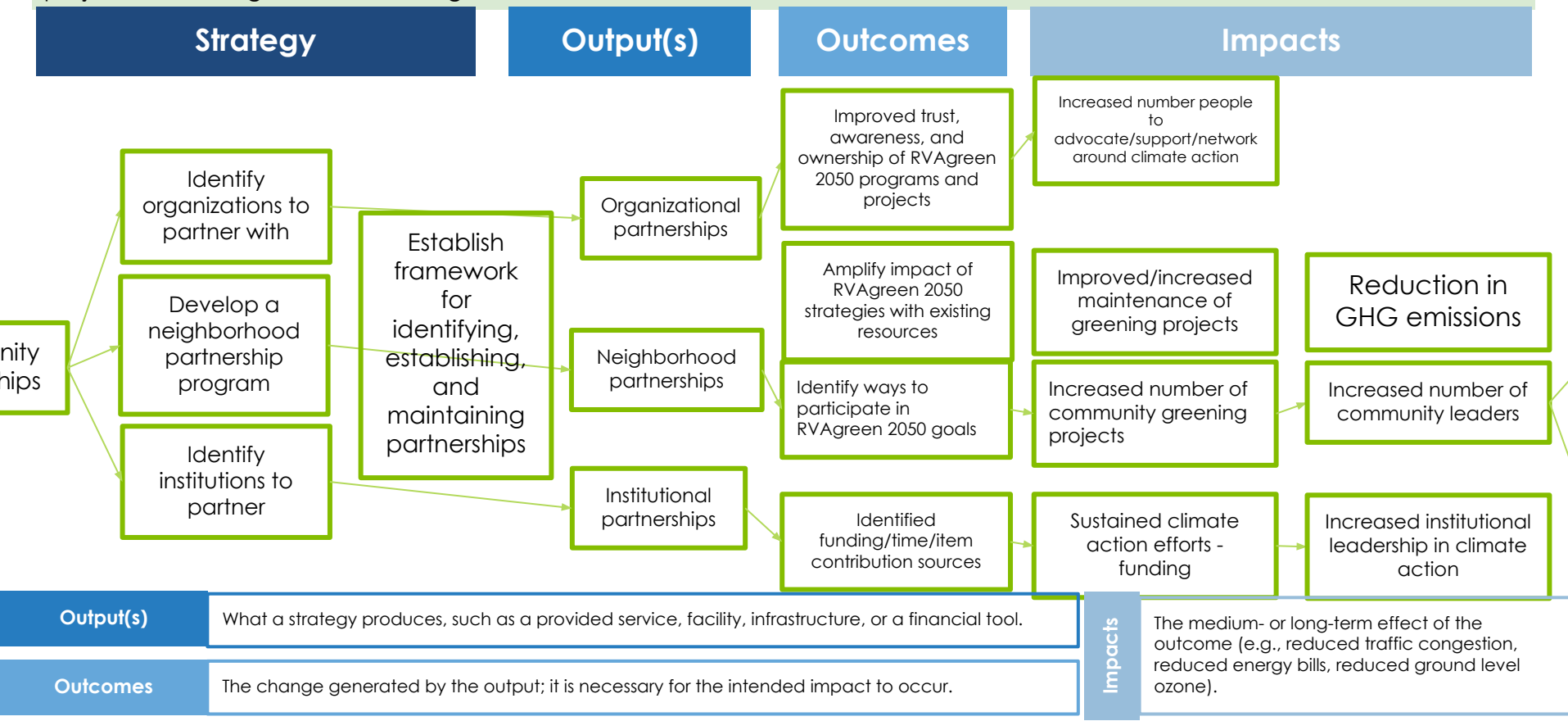
Impacts

The medium- or long-term effect of the outcome (e.g., reduced traffic congestion, reduced energy bills, reduced ground level ozone).

Kendra's Group

Objective 1: Ensure that historically disinvested communities that are most affected by local climate impacts are centered and involved in the processes of developing, implementing, and evaluating solutions as a result of equitable communication and engagement strategies.

Strategy: Community Partnerships - Develop a climate action and resilience neighborhood partnerships program to build trust, share knowledge, identify and connect community projects to volunteers and resources by leveraging community connections, encouraging institutions to create neighborhood partnerships, and partnering with existing organizations to align projects with RVAgreen 2050 strategies.



Objective 2: Increase the Richmond community's social resilience to climate change.

Strategy: Organizational Collaboration - Connect and build capacity among community leaders, public health and healthcare infrastructure, local nonprofits, and businesses to collaboratively identify neighborhood leaders and resources for emergencies and develop community asset maps to increase climate resilience.

Increased opportunity to decrease disaster during climate emergency

Strategy

Connect and build capacity among community leaders

Connect and build capacity among public health and healthcare infrastructure

Connect and build capacity among local non profits

Connect and build capacity among local businesses

Organizational Collaboration

Output(s)

Established framework for business to participate in climate emergencies - food, funding, shelter, distribution, reimbursement)

Identified neighborhood leaders

Identified resources for climate emergencies

Community asset map created

Outcomes

A more decentralized leadership focused on participants (ex. Tricycle Gardens & LGBG)

Training and education for climate action (Climate Action Corps)

Identified resource locations in climate emergency/pamphlet for emergency scenarios created

Impacts

Neighborhood level engagement

Increased responsiveness to emergencies

Increased geographic distribution of resources

Increased/improved maintenance of projects

Improved community trust

More efficient use of resources (labor, funding, planning) collaborative instead of centralized

Output(s)

What a strategy produces, such as a provided service, facility, infrastructure, or a financial tool.

Outcomes

The change generated by the output; it is necessary for the intended impact to occur.

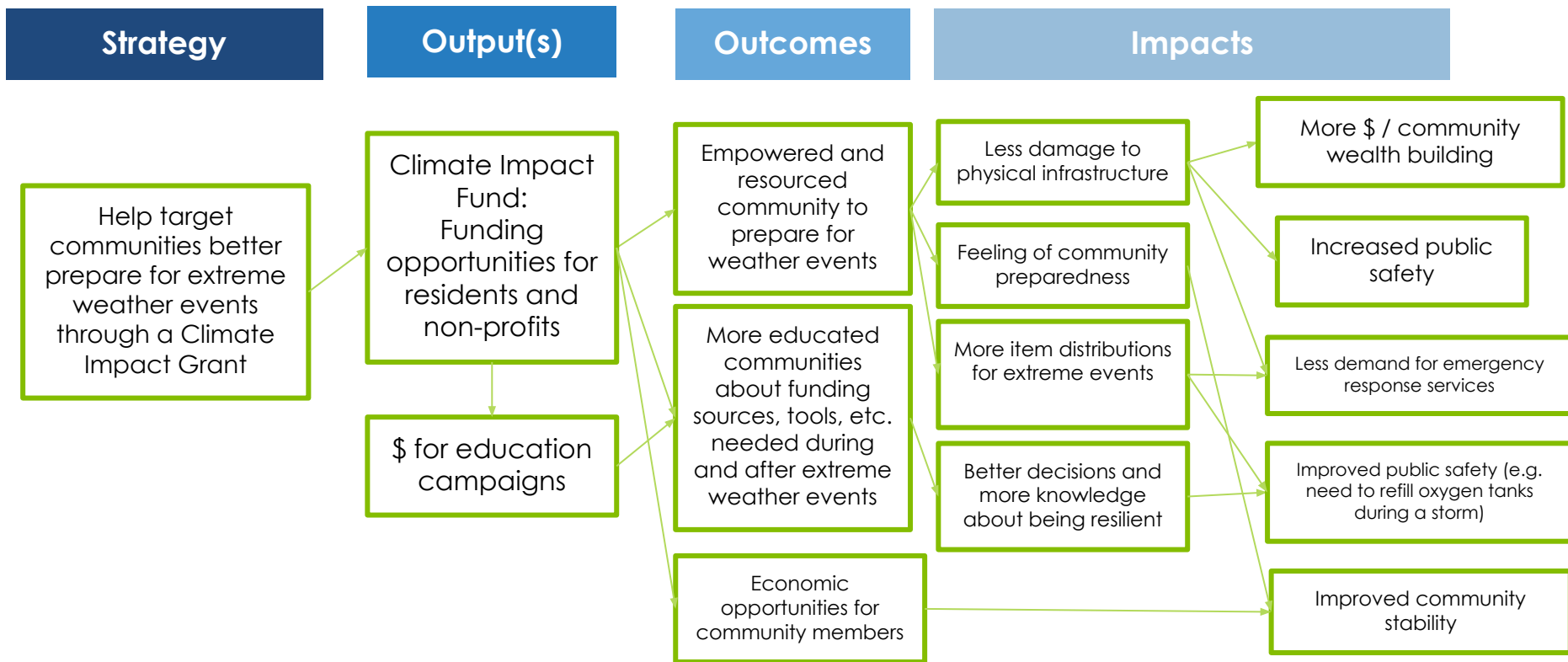
Impacts

The medium- or long-term effect of the outcome (e.g., reduced traffic congestion, reduced energy bills, reduced ground level ozone).

David's Group

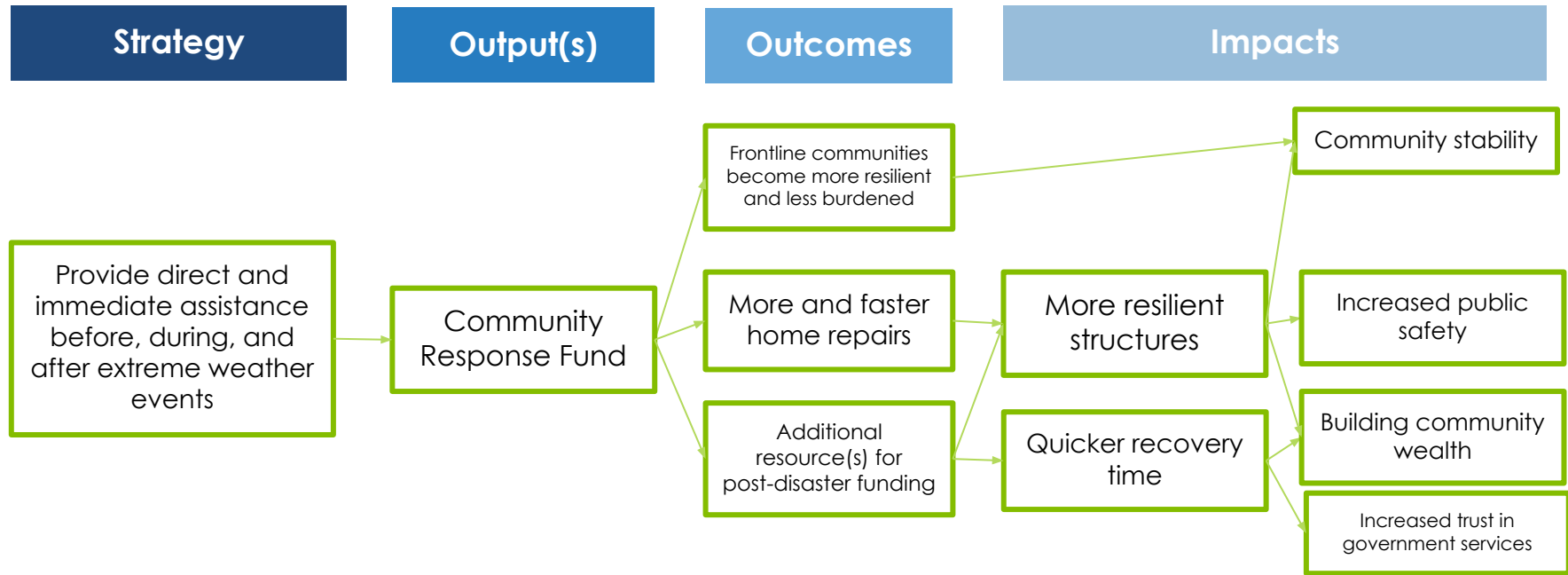
Objective 1: Ensure that historically disinvested communities that are most affected by local climate impacts are centered and involved in the processes of developing, implementing, and evaluating solutions as a result of equitable communication and engagement strategies.

Strategy: Climate Impact Grant - Create a climate impact fund to provide grants to help target communities prepare for extreme weather events, and pay residents and enable local nonprofits to work on climate action and resilience projects in target neighborhoods.



Objective 2: Increase the Richmond community's social resilience to climate change.

Strategy: **Community Response Fund** - Utilize the Central Virginia COVID-19 Response Fund and other eligible sources to provide direct and immediate assistance to community organizations that assist residents before, during, and after extreme weather events. Eligible expenses should include home repairs, healthcare costs, among others.



Output(s)

What a strategy produces, such as a provided service, facility, infrastructure, or a financial tool.

Outcomes

The change generated by the output; it is necessary for the intended impact to occur.

Impacts

The medium- or long-term effect of the outcome (e.g., reduced traffic congestion, reduced energy bills, reduced ground level ozone).

Examples

Objective 2: Increase the Richmond community's social resilience to climate change.

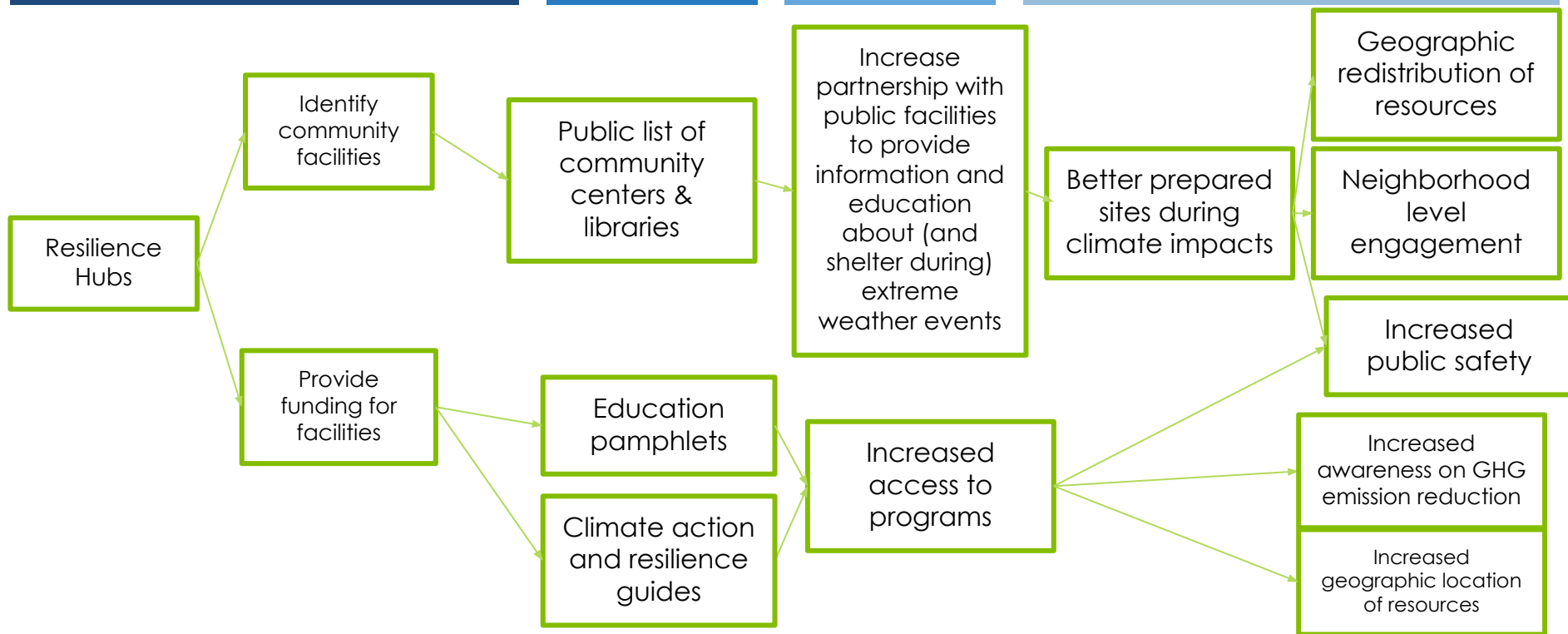
Strategy: Resilience Hubs - Identify community facilities across the city, such as community centers and libraries, and provide funding to enable these resources to serve as resilience hubs and cooling centers to the community, particularly in areas with low-income, elderly, young, and homeless populations

Strategy

Output(s)

Outcomes

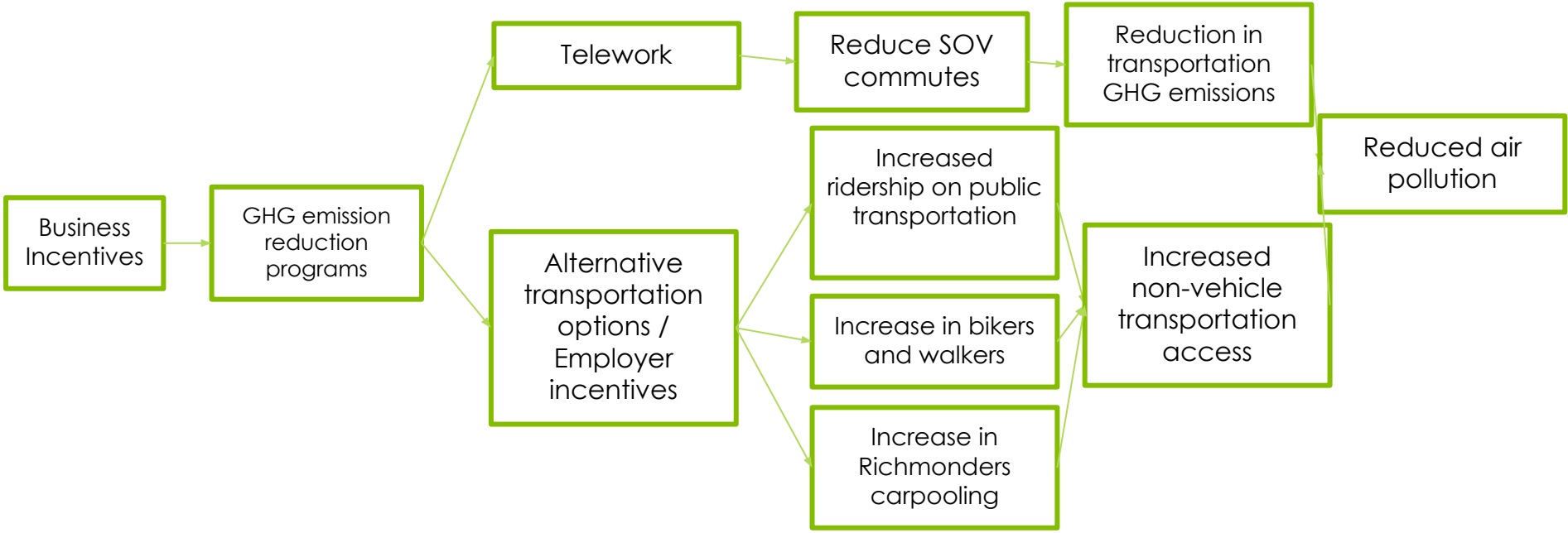
Impacts



Objective 1: Ensure that historically disinvested communities that are most affected by local climate impacts are centered and involved in the processes of developing, implementing, and evaluating solutions as a result of equitable communication and engagement strategies.

Strategy: **Business Incentives** – Develop incentives for employers to facilitate GHG emission reduction programs including but not limited to telework and offsetting the cost of employee alternative transportation options.

Strategy	Output(s)	Outcomes	Impacts
----------	-----------	----------	---------



*Exit breakout
rooms!*

Wrap-up and next steps

- Next meeting: July 16th @1pm, “RVAgreen2050 Implementation and Accountability”
- NOW:
 - General reflections?
 - Fill out feedback survey
 - Share updates, upcoming events, and resources in the chat

THANK YOU!

CoR Dept. of Social Services Survey

Hello Residents of Richmond!

Through our collaboration with the American Public Human Services Association (APHSA), the City of Richmond Department of Social Services remains committed to our mission to improve the quality of life for all people of the City of Richmond.

Your Voice Matters! In 2018, we asked you how we were doing, and we're asking you again now. On the heels of a public health emergency, and during a movement towards racial truth and reconciliation, it is more important than ever that we hear from you about the services that we provide to our City.

Currently, residents of the City of Richmond have an opportunity to share their thoughts by participating in a short survey. The survey will take no longer than 10 minutes to complete, and your answers are confidential. To participate in the survey, simply click on the link below (English or Spanish).

English: <https://www.surveymonkey.com/r/332PKFL>

Spanish (Updated): <https://www.surveymonkey.com/r/QQJ5L3P>

*Both survey links will remain active until June 30th, 2021 at 11:59 p.m.

