

Diamond District Self-guided Tour (approximately 30 minutes)

1. The Diamond District is currently home to a baseball stadium, surface parking, the Arthur Ashe Jr. Athletic Center, Sports Backers Stadium, a recreational baseball field, vacant land, and streets.

LEFT onto Arthur Ashe

RIGHT onto W. Leigh

2. Scott's Addition is a mixed-use industrial neighborhood that features new apartment complexes, businesses, maker spaces, breweries, cideries, distilleries, fitness studios, barcades, and every day seems to add more exciting uses in renovated industrial buildings along with new construction.

LEFT onto Roseneath

LEFT onto W. Broad

- Scott's Addition was rezoned in 2017 following the adoption of the Pulse Corridor Plan which called for developing the area adjacent to the Pulse Bus Rapid Transit line in a compact & mixed, connected, and thriving & equitable development pattern.
- The City is planning improvements to the W. Broad Green at the Scott's Addition BRT station.

RIGHT onto Arthur Ashe

3. The Museum District is home to the Virginia Museum of Fine Arts (VMFA) and the Virginia Museum of History and Culture (VMHC) and is a neighborhood that features mostly single-family homes with a sprinkling of commercial destinations within the neighborhood, like Boho Cycle Studio, Northside Juice Co. and Black Hand Coffee. The VMFA is planning a \$190 million expansion and the VMHC is wrapping up a \$30 million renovation and expansion project.

RIGHT onto Ellwood

- Carytown Exchange is a new Publix-anchored development at the western end of Carytown.

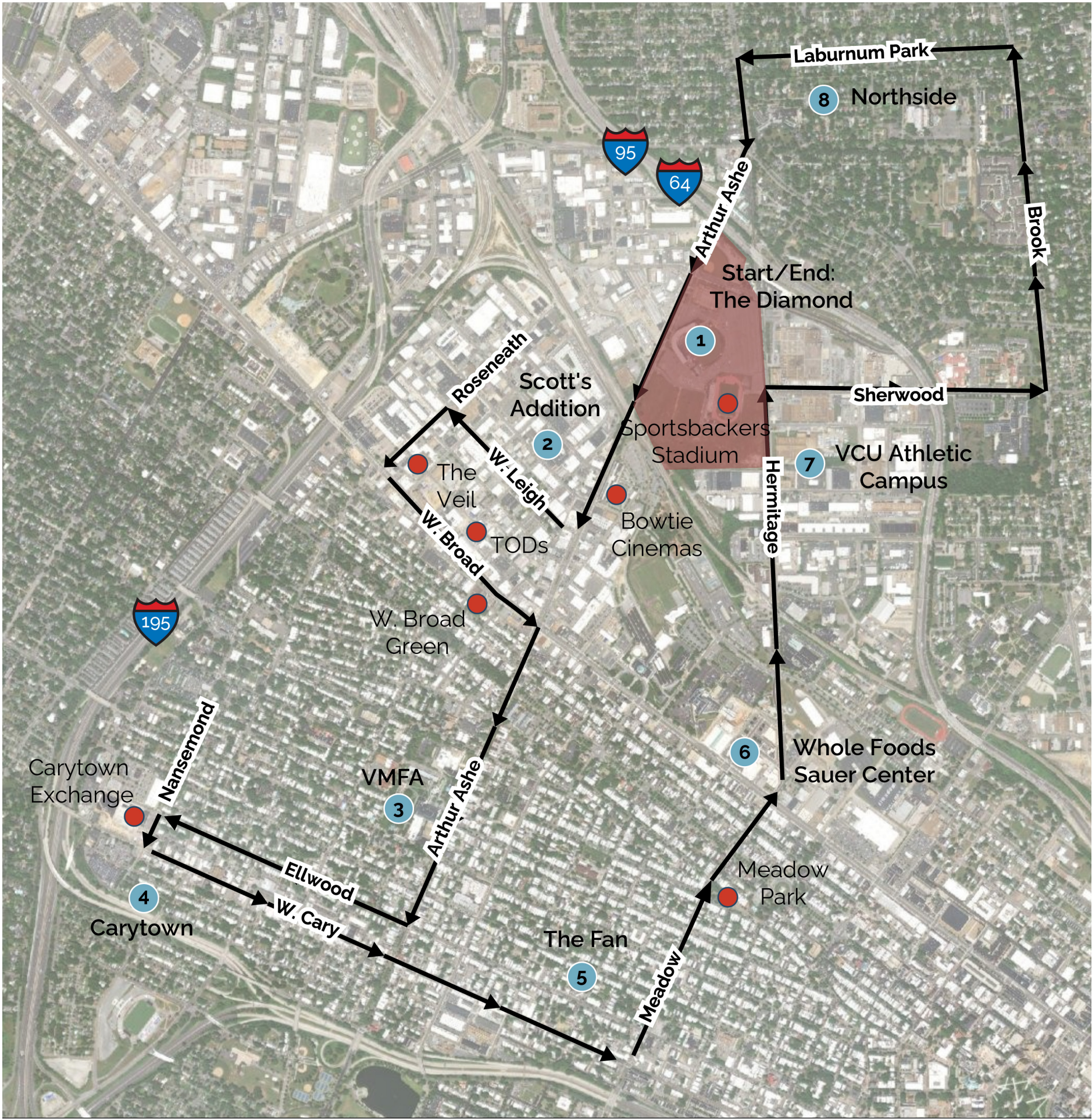
LEFT onto Nansemond

LEFT onto W. Cary

4. Carytown is defined by the commercial retail strip on Cary Street that is home to quirky clothing stores, a wide range of restaurants, and a historic movie theater that shows recent blockbusters for discounted tickets and features music from an organ on a hydraulic lift on Saturday nights. Every spring Carytown hosts the French Film Festival, which is the largest French Film festival outside of France and draws Francophiles from all over North America.

LEFT onto Meadow

5. The Fan is listed in the National Register of Historic Places and features beautifully renovated Victorian-era homes nestled in a very walkable, urban neighborhood with excellent access to pocket parks and retail within walking distance. The Fan is on the western edge of VCU's Monroe Park Campus.





6. The Sauer Companies own approximately 40-acres of property at Hermitage and W. Broad Street. They recently completed Phase I of Sauer Center, a retail and office development featuring Whole Foods and a Carmax office building.

Meadow becomes Hermitage

7. VCU is currently developing plans to create a 40-acre athletic village immediately east of the site across Hermitage Road. The athletic village is anticipated to include indoor and outdoor tennis courts, indoor and outdoor track and field, a soccer stadium and practice fields, and supporting uses.

RIGHT onto Sherwood

LEFT onto Brook

8. Northside neighborhoods nearby include Bellevue, Ginter Park, Rosedale, Sherwood, Edgewood, Barton Heights, and others featuring a wide range of home styles from small bungalows to large four square homes on tree-lined streets with sidewalks that connect to small parks and quaint commercial corridors like MacArthur Avenue and Brookland Park Boulevard.

LEFT onto Laburnum Park

LEFT onto Hermitage

Slight RIGHT to stay on the road (Hermitage becomes Arthur Ashe)

Other Local Attractions (outside of the tour map area)

If you have more time, check out some of these neighborhoods. A central address is included to guide your GPS.

- **Brown's Island/James River** — 501 S. 5th Street (future site of the \$460 million CoStar campus)
- **St. John's Church/Church Hill** — 2401 E. Broad Street (Historic St. John's Church)
- **Shockoe** — 1500 E. Main Street (Main Street Station)
- **Monument Avenue** —2501 Monument Avenue (The Branch Museum of Architecture and Design)
- **Jackson Ward** — 600 N. 2nd Street (Maggie L Walker National Historic Site)
- **Downtown** — 900 E. Broad Street (City Hall)
- **Manchester** —609 Hull Street (The Continental Manchester)

