



# Department of Public Utilities

## Byrd Park Reservoir Rehabilitation Newsletter

### Project Information

The Byrd Park Reservoir was built in 1876 and has been serving the City of Richmond residents and surrounding counties continuously since then. The Reservoir operates as two finished water tanks. Upgrades and maintenance have occurred over the years to ensure peak operating capacity. DPU is in the process of additional upgrades to improve the distribution system reliability and increase the operational flexibility of facilities associated with the Reservoir. This rehabilitation project will be completed in two phases.

#### *PHASE I – Completed*

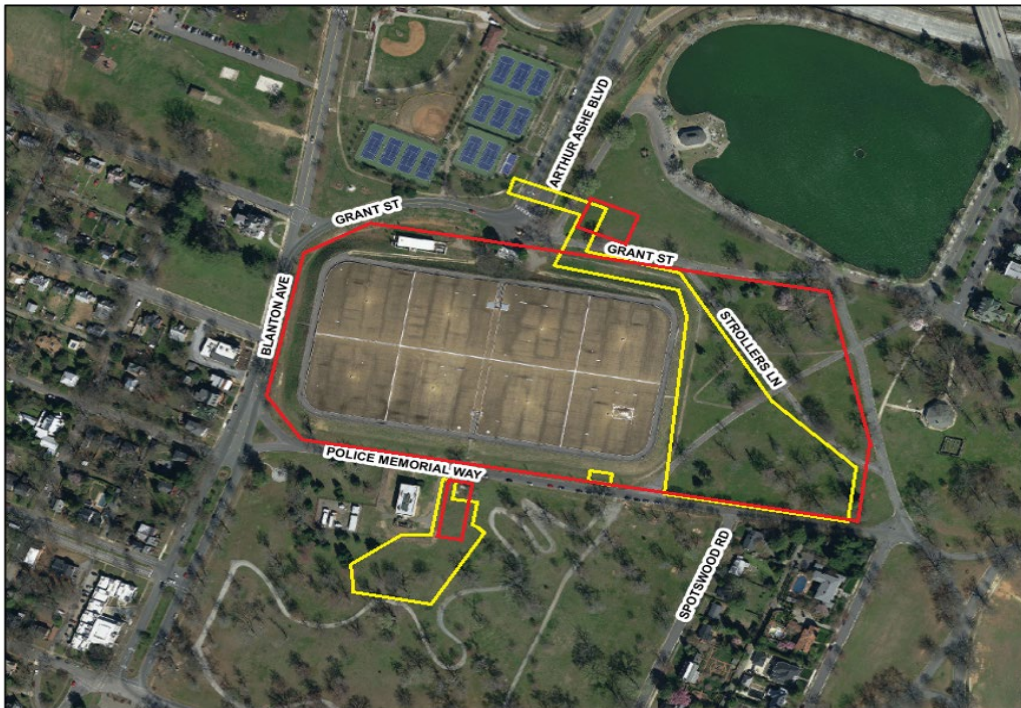
*Outlined in yellow in the image below.*

The City of Richmond is constructing a water distribution system upgrade located adjacent to the water storage tank in Byrd Park. The purpose of the Byrd Park Zone 1N Supply Main and Inlet Valve Replacement work is to improve distribution system reliability and increase the operational flexibility of facilities associated with the Tank.

#### *PHASE II – SUMMARY*

*Outlined in red in the image below.*

The Byrd Park Tank concrete roofs are reaching the end of their useful life and will be replaced by new aluminum roofs in Phase II. Some portions of this work will occur concurrent with Phase I construction. Please note that Strollers Ln and Lakeview Ave will remain open, with occasional closings.



## FREQUENTLY ASKED QUESTIONS

### What is happening now?

Construction of Phase I of the rehabilitation project has been completed. Construction of Phase II is scheduled to begin in early 2023 and Crowder Construction Company has been awarded the project. This phase of the project is expected to last 5 years.

### How long will this project last and will work impact my water service?

Project work has been planned to allow the water system to remain in service throughout the anticipated four year construction effort. This project has been designed and construction efforts phased so as not to impact water service.

### Will this project impact access to Byrd Park or Park events?

The park will remain open. Construction will be sequenced to maintain use of the park. Construction will take place within a fenced area whose boundaries will shift as the work progresses. Access to the rest of the park and its trails will be open to the public. DPU has and will continue to work closely with the Department of Parks, Recreation and Community Facilities (PRCF) to ensure park events can continue as planned.

### Will this project impact traffic in the area?

Some short-term road and lane closures will be needed on roads around the Reservoir. Public notification will take place prior to the road closures. Be sure to follow @DPUStreetNews on Twitter for this and all road closures.

### Will this project impact on-street parking?

During construction, on-street parking may be temporarily restricted during lane or road closures. Signs will be posted in advance.

### When will this work be performed?

Work may be performed between the hours of 8:00 a.m. to 5:00 p.m., Monday through Friday. Some isolated construction tasks may need to be performed after-hours or on weekends.



*If you have questions or comments about this project, please contact the Department of Public Utilities:*

**Ricky Hatfield**

Capital Projects Manager Sr.

(804) 646 -1933

[Ricky.Hatfield@richmondgov.com](mailto:Ricky.Hatfield@richmondgov.com)

*Media Contact:*

**Rhonda Johnson**

Public Information Manager, Sr.

(804) 646 - 5463

[Rhonda.Johnson@richmondgov.com](mailto:Rhonda.Johnson@richmondgov.com)