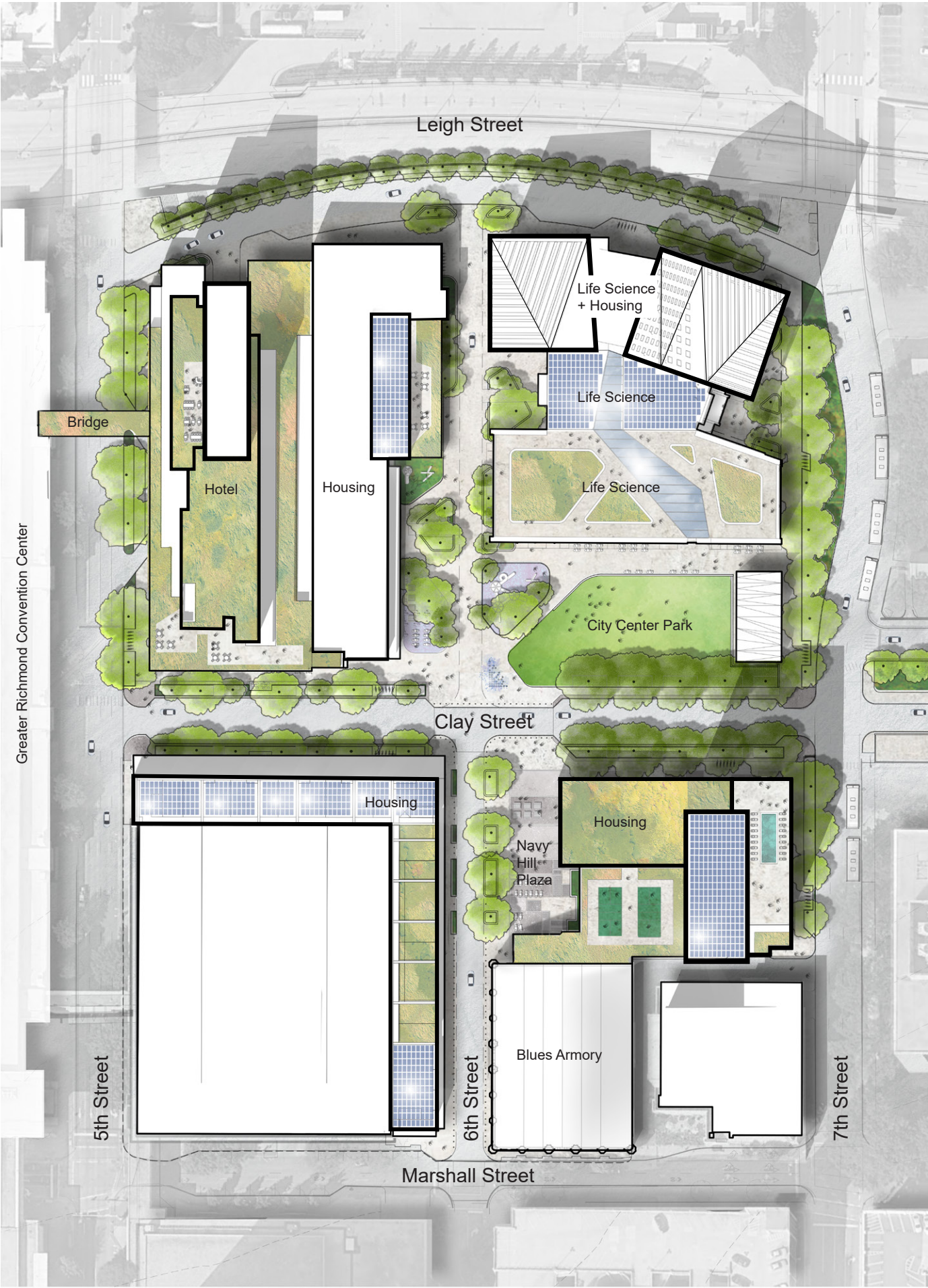


Richmond Community Development Partners

- Machete Group I Bank Street: Master Developer
- Highgate: Hotel Developer + Operator
- M Companies: Historic Preservation Developer
- Brinshore: Affordable Housing Developer
- Glenline: Life Science Developer
- Hanbury MasterPlanner I Urban Design
- Marvel I Rockwell Group: Hotel Architect + Interior Design
- Hanbury I SMBW I KEI Design Architecture
- Moseley: Affordable Housing Architect
- Waterstreet I Fall Line I Marvel: Landscape Architecture
- VHB: Civil
- Todd Waldo I Hanbury: Community Engagement
- CW Consulting Group: Workforce Development
- BRV: Placemaking + Programming
- Stantec: Resiliency + Sustainability
- Gilbane Building Co I Davis Brothers Construction I Canterbury Enterprises I LF Jennings: Contractor

Concept

City Center will be the cornerstone of our downtown, offering convention center visitors a vibrant destination full of life and energy; creating a platform for scientific advancement at the new Bio Tech Park; a convenient and desirable place to live and socialize for VCU Health doctors, nurses, students, and other health care providers; and a new urban living room, offering live entertainment and graceful public spaces for all of Richmond.



Blues Armory + 6th Street Market



Convention Center Hotel along 5th Street



City Center Park + Clay Street Reconnected