



February 5, 2024

James River and Kanawha Canal Historic District. Calder Loth, 2016



Cultural Heritage Stewardship Plan

Prepared by



About the Firm

- Established 2004
- Small, Micro, Woman, and Minority-owned business
- Full service historic preservation consulting firm
- Located in Norfolk, Virginia
- Projects throughout the Southeast and Mid-Atlantic Region



Project Team



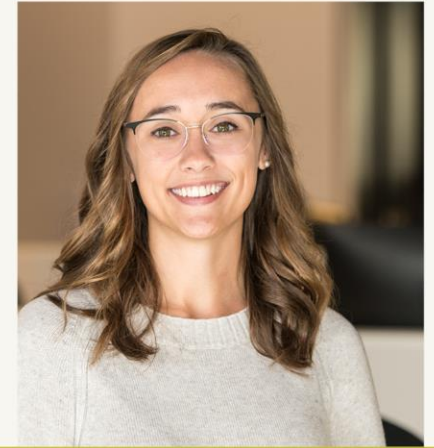
Shockoe Valley and Tobacco Row HD. Calder Loth 2020



Paige Pollard
Principal-in-charge



Kayla Halberg
Project Manager



Ashlen Stump
Research & Data



Ashley King
Project Administration



Celina Adams
Community Engagement



Leon Guanzon
Graphic Design





What neighborhood do you live in?



Project Goals

Creation of City-wide Cultural Historic Stewardship Plan

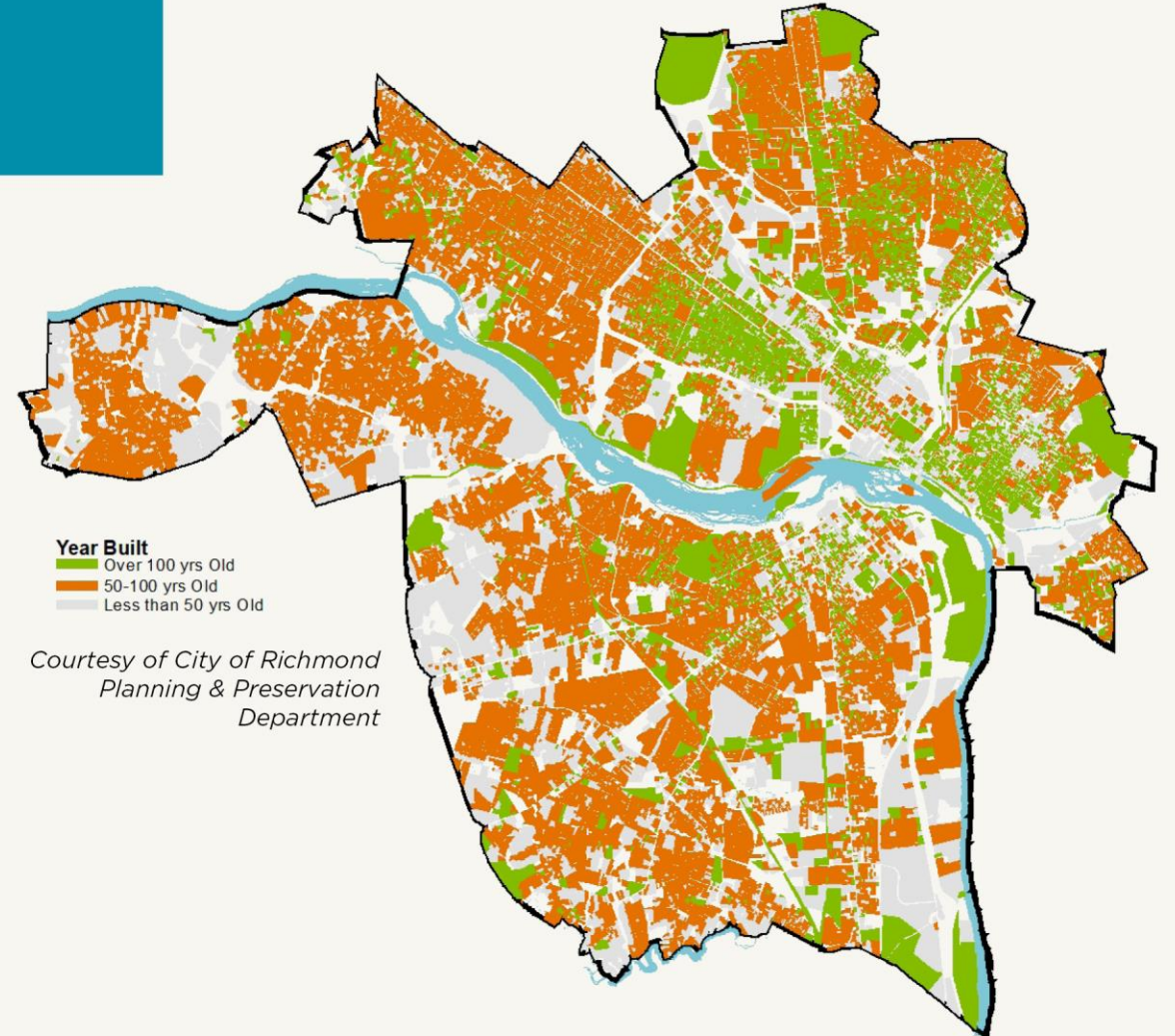
- Enhance City's existing policies, ordinances, and programs
- Design practical strategies and achievable goals that help manage change
- Acknowledge “the role historic preservation plays and will continue to play in shaping the city's urban form and character.”

Fulfillment of Current Vision

- Alignment with Richmond 300
 - ▶ Objective 3: Historic Preservation

Emphasis on Equity & Inclusion

- Identify areas of diversity in City's cultural resources
 - ▶ Provide approaches to highlight underrepresented groups



Project Scope Phase II

■ Fall Community Engagement

- ▶ In-person & Virtual Meetings
- ▶ Online Community Questionnaire

■ Winter & Spring Community Engagement

- ▶ Open House
- ▶ Virtual Public Meetings
- ▶ Deliverables available for review and comment

■ Spring & Summer Content Development

- ▶ Public Survey Analysis
- ▶ Outline
- ▶ Full Draft Development



Cary Street Park and Shop Center. Calder Loth 2020

Key Terms

■ **Stewardship:**

Care and responsible management

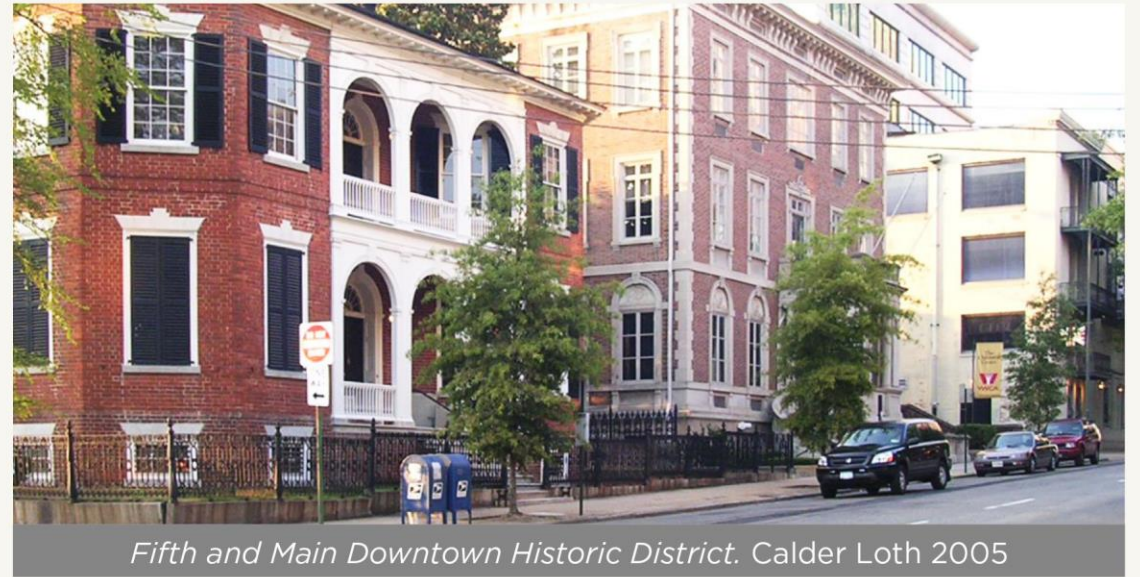
■ **Preservation:**

Stewardship of historic buildings, sites, places, neighborhoods, and community assets

■ **Cultural Resource:**

A broad term that refers to a variety of historic assets within a community

- ▶ **Tangible:** Physical, able to see or feel
- ▶ **Intangible:** Not immediately visible or apparent, lost resources, oral history, cultural traditions



■ **Historic:**

Typically refers to a place, building, object, district, or site that is more than 50 years old

■ **Cultural Heritage:**

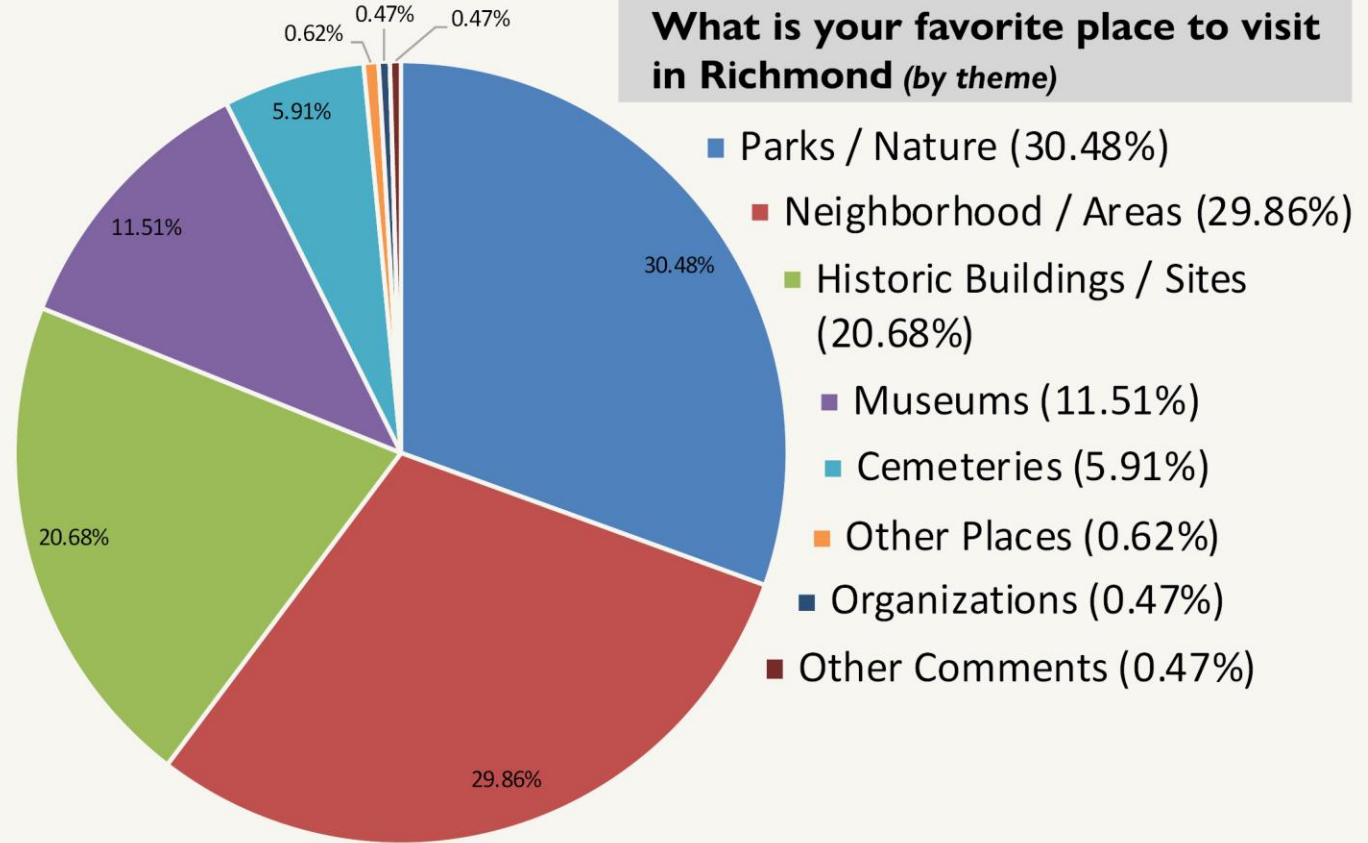
Legacy of tangible and intangible attributes of a group or society inherited from the past

How does the term cultural heritage resonate with you? Do any of the other key terms stand out to you?



Community Questionnaire Summary

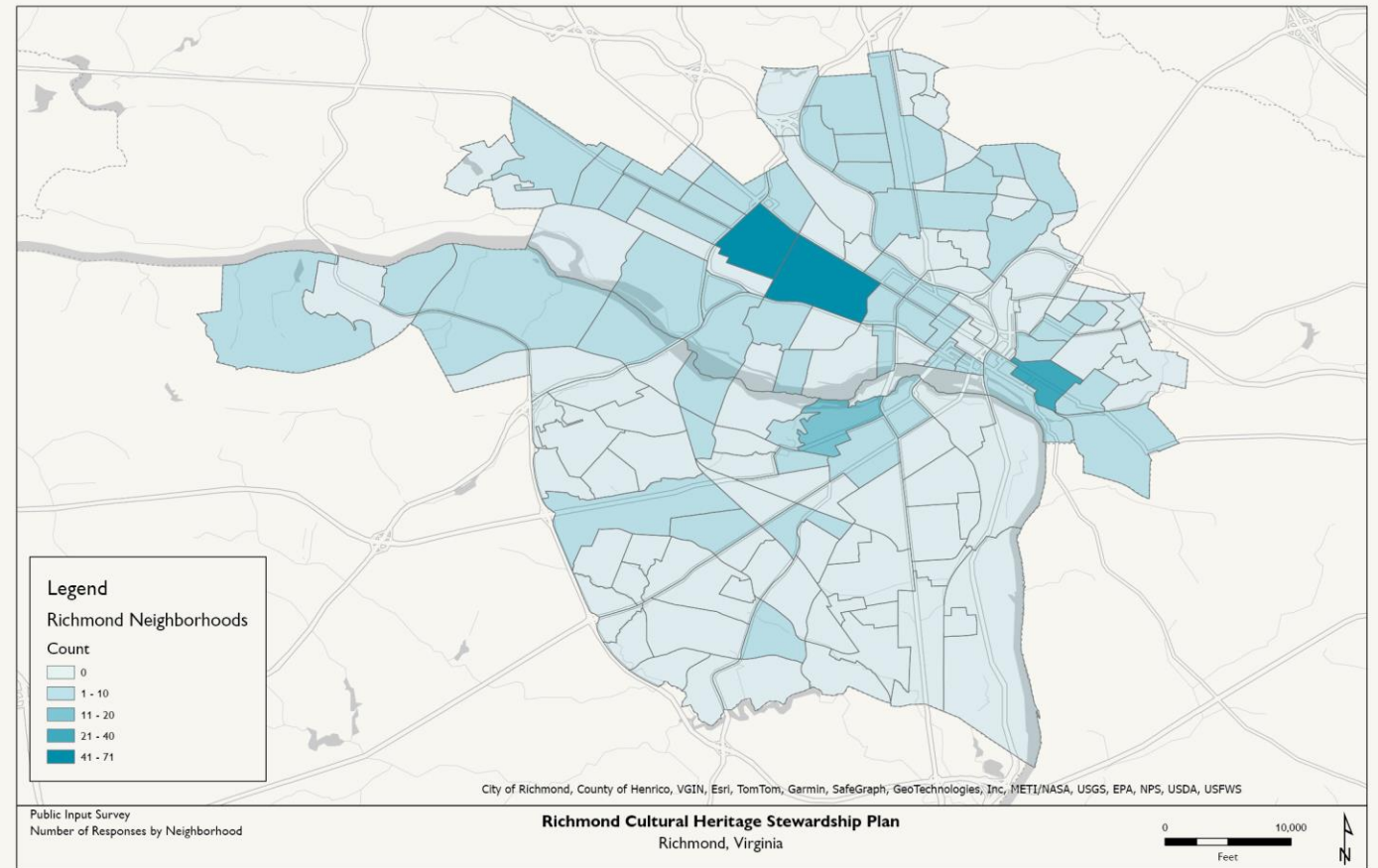
- **Online Public Survey**
- **Open October 16, 2023 – November 20, 2023**
- **Total number of survey participants: 409**



Community Questionnaire Summary

Participants...

- ▶ Most identified **interest in history** and/or **enjoy visiting historic places**
- ▶ Many **live in old houses** and/or **live or work in an historic neighborhood**
- ▶ All have a **direct or frequent relationship with Richmond**; majority are **long-term residents**
- ▶ Were primarily **white, female, and aged 51+**



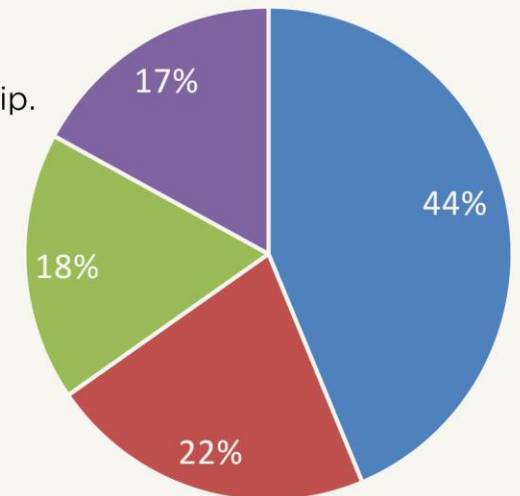
Community Questionnaire Summary

Takeaways from Stakeholder Interviews:

- ▶ Focus was not just on physical buildings, but also intangible assets such as **character and culture**
- ▶ Emphasis on **equity and inclusion**
- ▶ **Development pressure** is the greatest perceived threat to historic resources
- ▶ **Protections for community character** that are not cost-prohibitive
- ▶ Complex relationship between **housing affordability, growth, and preservation**

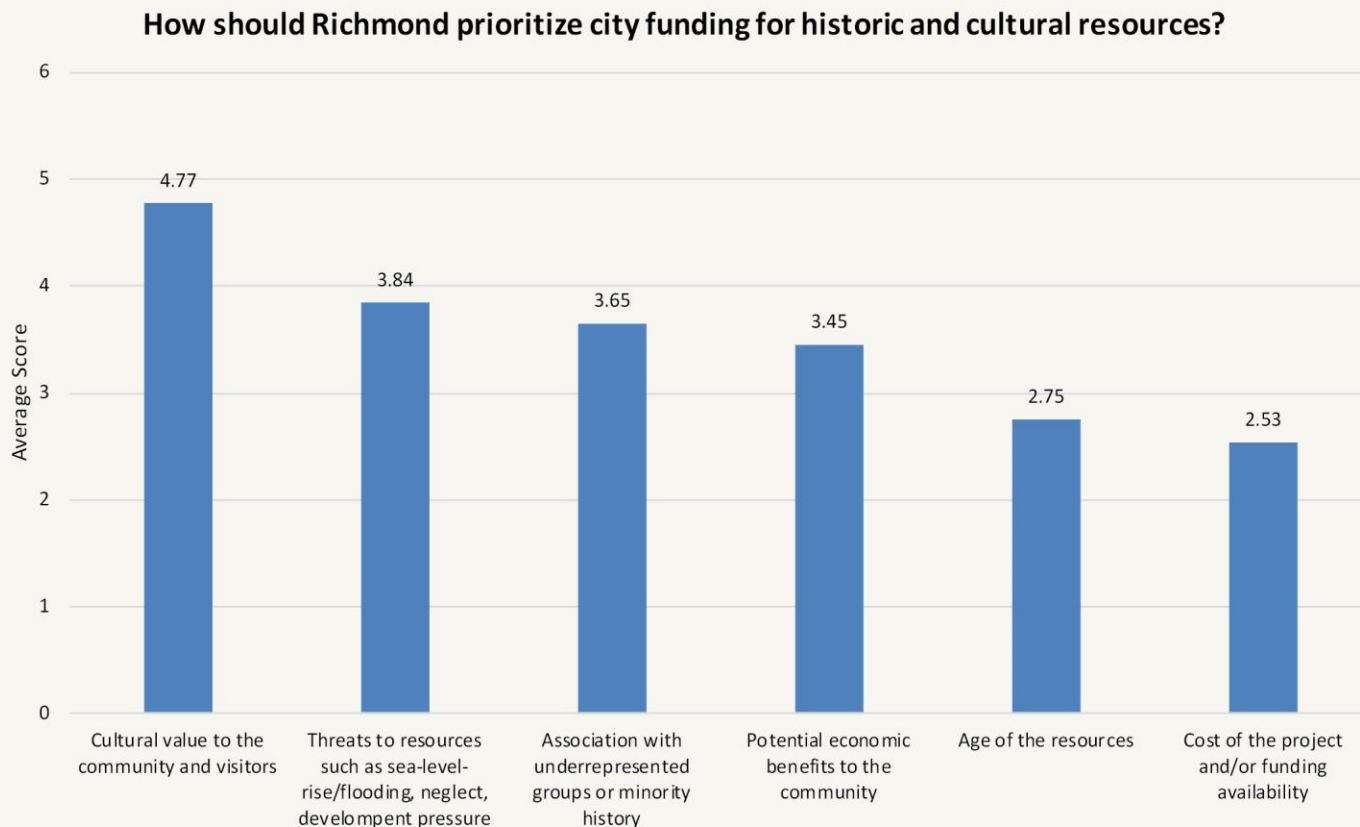
How do you view the relationship between housing costs and historic preservation in Richmond?

- ▶ Preservation assists in providing new or retaining existing housing affordability.
- ▶ Preservation creates housing affordability issues.
- ▶ Other
- ▶ There is no relationship.



Community Questionnaire Summary

Takeaways from Community Questionnaire:



- ▶ Many mid-century & **“less traditional” historic resources are worth saving**
- ▶ Historic & cultural resources bring people to Richmond; **development & density pressures are also their biggest perceived threat.**
- ▶ Housing affordability has a **complex relationship with historic preservation.**
- ▶ **Cultural value is the most important factor** in determining funding priorities for historic and cultural resources, **followed by threats to resources, association with marginalized groups, and economic benefits.**



Community Questionnaire Summary

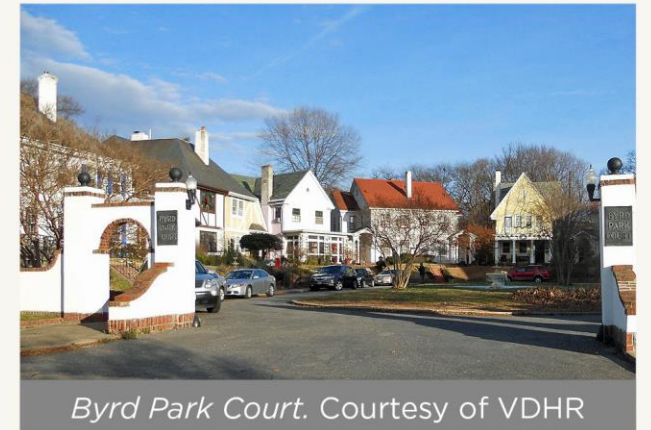
- ▶ High priority places include
 - Designated historic landmarks & districts
 - Places associated with underrepresented group
 - Historic neighborhoods
- ▶ High priority initiatives
 - Incentive programs for property owners
 - New or expanded zoning tools for neighborhoods



St. John's Church. Courtesy of VDHR



Shockoe Hill Burying Ground. Dan Mouer 2021



Byrd Park Court. Courtesy of VDHR



**Do you agree or disagree with the key takeaways?
Is there anything that you think is missing?**

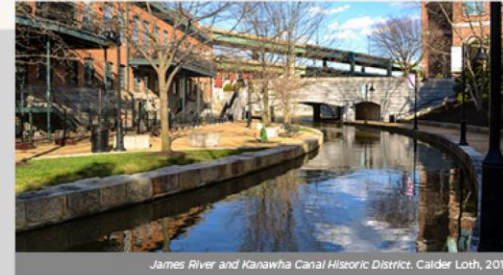


Plan Outline

- Chapter 1
Introduction
- Chapter 2
Summary of Public Engagement
- Chapter 3
Trends & Challenges
- Chapter 4
Internal & External Partnerships
- Chapter 5
Goals & Initiatives
- Chapter 6
Collaborative Implementation



City of Richmond Cultural Heritage Stewardship Plan



James River and Kanawha Canal Historic District. Calder Loth, 2016



Broad Street HD. Calder Loth, 2020



Fan Area HD. Calder Loth, 2018

Detailed Outline by:



Ginter Park Terrace HD, Hawthorne Avenue. Calder Loth, 2021

The purpose of a **Cultural Heritage Stewardship Plan (CHSP)** is to identify, recognize, and safeguard a community's cultural and historic assets. These assets, also referred to as resources, may include buildings, structures, communities or places, landscapes, below-ground resources (like archaeological artifacts or cemeteries). Cultural heritage also includes intangible aspects of community history such as shared memory and memorialization, oral history or oral tradition, lost resources, and identity.

Establishing a plan provides a way to manage change in a sustainable way as communities evolve and grow over time. The outline below is intended to offer a preview of what the plan may ultimately include. The City and CPG seek input on the content and direction of this outline in order to ensure it aligns with the stewardship philosophy and vision of Richmonders.

Guiding Principles

- ▶ Ensuring Equity and Inclusivity in all Cultural Heritage Stewardship Programs
- ▶ Increasing awareness of and appreciation for the City's historic and cultural places
- ▶ Promoting a balance between development and preservation through policies



Hollywood Cemetery. Calder Loth, 2021

Trends and Challenges



1. Demographic Overview & Population Growth
2. Housing Affordability
3. Development & Density Pressures
4. Intangible Cultural Resources
5. Neglect, Deterioration, and Demolition
6. Natural and/or Man-made Disaster
7. Survey and Inventory Gaps

Goals

■ Goals and initiatives fall into four categories

1. Identify & Recognize
2. Safeguard & Manage Change
3. Engage & Educate
4. Streamline Processes & Maximize Resources



Jackson Ward Historic District. Calder Roth 2021

Factors for Prioritization



Shockoe Slip, Calder Loth 2020

1. Threats to resources (such as development pressure, neglect, demolition, disaster)
2. Resource rarity
3. Financial hardship
4. Cultural Value and/or Association with underrepresented or underserved communities
5. Historic age and integrity

Collaborative Implementation

■ Chapter 6 will also include

- ▶ **Implementation Plan:** Chart or diagram that outlines each of the goals and initiatives of Chapter 5, and provides measurements for prioritization, timeline for implementation, measures of success, and breakdown of responsible parties
- ▶ **Ten-year Survey & Documentation Plan:** Diagram outlining a recommended approach to filling the architectural and archaeological survey gaps, and increasing understanding of under-documented and under-recognized cultural heritage. This may include survey, markers, historic context studies, National Register Nominations, and oral history projects, for example.



How to Provide Feedback



■ ONLINE COMMENTS

■ Open Houses

February 28th

Option 1: *Main Public Library, Basement Auditorium,*
11am-1pm, 101 E. Franklin Street

Option 2: *Hickory Hill Community Center,*
5-7pm, 3000 E. Belt Blvd.

■ City Planning Commission Meeting

March 19th, 6pm

■ UPCOMING: First Full Draft Comment Period & Public Meeting

June 2024

Project Schedule

October - December

- **COMMUNITY ENGAGEMENT ACTIVITIES**
- Advisory Committee Outreach
- **COMMUNITY SURVEY**
- Analysis of Community Engagement
- Research

January - February

- Develop Summary of Public Engagement
- Prepare Detailed Outline of Plan
- **OPEN HOUSE**
- Advisory Committee Meeting
- **PUBLIC MEETING & CITY PLANNING COMMISSION PRESENTATION**

March - May

- Content Development for 1st Draft of Plan

June - August

- Draft Review & Revision Cycle
- **PUBLIC MEETING & CITY PLANNING COMMISSION PRESENTATION**

September - December

- Final Draft Development
- **FINAL PRESENTATIONS**
- Council Adoption



Commonwealth Club HD. Calder Loth, 2019



Laburnum Park Blvd

Questions?



Monroe Park



www.commonwealthpreservationgroup.com
admin@commonwealthpreservationgroup.com
757-923-1900

